

Phospho-PDHA1 (S293) Antibody
Rabbit mAb
Catalog # AP92538**Specification**

Phospho-PDHA1 (S293) Antibody - Product Information

Application	WB, IHC, IP
Primary Accession	P08559
Reactivity	Rat
Clonality	Monoclonal

Other Names

PDH; PDHA; PDHA1; PDHCE1A; PHE1A; Pyruvate Dehydrogenase (lipoamide) alpha 1; Pyruvate Dehydrogenase E1 alpha;

Isotype	Rabbit IgG
Host	Rabbit
Calculated MW	43296 Da

Phospho-PDHA1 (S293) Antibody - Additional Information

Purification	Affinity-chromatography
Immunogen	A synthesized peptide derived from human Phospho-PDHA1 (S293)
Description	The pyruvate dehydrogenase complex catalyzes the overall conversion of pyruvate to acetyl-CoA and CO(2). It contains multiple copies of three enzymatic components: pyruvate dehydrogenase (E1), dihydrolipoamide acetyltransferase (E2) and lipoamide dehydrogenase (E3).
Storage Condition and Buffer	Rabbit IgG in phosphate buffered saline , pH 7.4, 150mM NaCl, 0.02% sodium azide and 50% glycerol. Store at +4°C short term. Store at -20°C long term. Avoid freeze / thaw cycle.

Phospho-PDHA1 (S293) Antibody - Protein Information

Name PDHA1

Synonyms PHE1A

Function

The pyruvate dehydrogenase complex catalyzes the overall conversion of pyruvate to acetyl-CoA and CO(2), and thereby links the glycolytic pathway to the tricarboxylic cycle.

Cellular Location

Mitochondrion matrix.

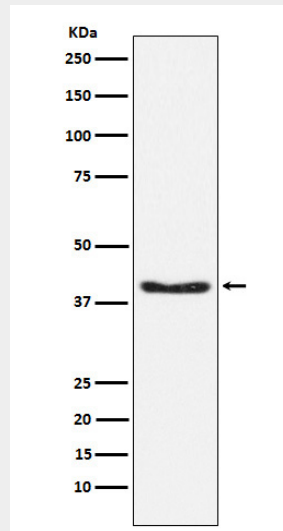
Tissue Location
Ubiquitous.

Phospho-PDHA1 (S293) Antibody - Protocols

Provided below are standard protocols that you may find useful for product applications.

- [Western Blot](#)
- [Blocking Peptides](#)
- [Dot Blot](#)
- [Immunohistochemistry](#)
- [Immunofluorescence](#)
- [Immunoprecipitation](#)
- [Flow Cytometry](#)
- [Cell Culture](#)

Phospho-PDHA1 (S293) Antibody - Images



Western blot analysis of Phospho-PDHA1 (S293) expression in 293T cell lysate.