

**Wnt5b Antibody**  
Rabbit mAb  
Catalog # AP92522

## Specification

---

### Wnt5b Antibody - Product Information

Application	WB, FC
Primary Accession	<a href="#">O9H1J7</a>
Clonality	Monoclonal
<b>Other Names</b>	
Wnt5b;	
Isotype	Rabbit IgG
Host	Rabbit
Calculated MW	40323 Da

### Wnt5b Antibody - Additional Information

Purification	<b>Affinity-chromatography</b>
Immunogen	<b>A synthesized peptide derived from human Wnt5b</b>
Description	<b>Ligand for members of the frizzled family of seven transmembrane receptors. Probable developmental protein. May be a signaling molecule which affects the development of discrete regions of tissues. Is likely to signal over only few cell diameters.</b>
Storage Condition and Buffer	<b>Rabbit IgG in phosphate buffered saline , pH 7.4, 150mM NaCl, 0.02% sodium azide and 50% glycerol. Store at +4°C short term. Store at -20°C long term. Avoid freeze / thaw cycle.</b>

### Wnt5b Antibody - Protein Information

**Name** WNT5B

#### **Function**

Ligand for members of the frizzled family of seven transmembrane receptors. Probable developmental protein. May be a signaling molecule which affects the development of discrete regions of tissues. Is likely to signal over only few cell diameters (By similarity).

#### **Cellular Location**

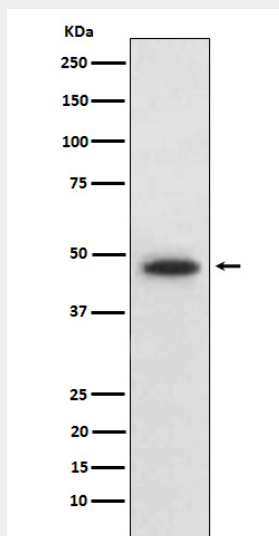
Secreted, extracellular space, extracellular matrix

### Wnt5b Antibody - Protocols

Provided below are standard protocols that you may find useful for product applications.

- [Western Blot](#)
- [Blocking Peptides](#)
- [Dot Blot](#)
- [Immunohistochemistry](#)
- [Immunofluorescence](#)
- [Immunoprecipitation](#)
- [Flow Cytometry](#)
- [Cell Culture](#)

### Wnt5b Antibody - Images



Western blot analysis of Wnt5b expression in HepG2 cell lysate.