

KDM1 / LSD1 Antibody
Rabbit mAb
Catalog # AP92521**Specification****KDM1 / LSD1 Antibody - Product Information**

Application	WB, FC
Primary Accession	O60341
Reactivity	Rat
Clonality	Monoclonal
Other Names	
AOF2; CPRF; EC1; KDM1; Kdm1a; LSD1;	
Isotype	Rabbit IgG
Host	Rabbit
Calculated MW	92903 Da

KDM1 / LSD1 Antibody - Additional Information

Purification	Affinity-chromatography
Immunogen	A synthesized peptide derived from human KDM1 / LSD1
Description	Histone demethylase that demethylates both 'Lys-4' (H3K4me) and 'Lys-9' (H3K9me) of histone H3, thereby acting as a coactivator or a corepressor, depending on the context.
Storage Condition and Buffer	Rabbit IgG in phosphate buffered saline , pH 7.4, 150mM NaCl, 0.02% sodium azide and 50% glycerol. Store at +4°C short term. Store at -20°C long term. Avoid freeze / thaw cycle.

KDM1 / LSD1 Antibody - Protein InformationName KDM1A ([HGNC:29079](#))**Function**

Histone demethylase that can demethylate both 'Lys-4' (H3K4me) and 'Lys-9' (H3K9me) of histone H3, thereby acting as a coactivator or a corepressor, depending on the context (PubMed: [15620353](http://www.uniprot.org/citations/15620353), PubMed: [15811342](http://www.uniprot.org/citations/15811342), PubMed: [16079794](http://www.uniprot.org/citations/16079794), PubMed: [16079795](http://www.uniprot.org/citations/16079795), PubMed: [16140033](http://www.uniprot.org/citations/16140033), PubMed: [16223729](http://www.uniprot.org/citations/16223729), PubMed: [27292636](http://www.uniprot.org/citations/27292636)). Acts by oxidizing the substrate by FAD to generate the corresponding imine that is subsequently hydrolyzed (PubMed: [15620353](http://www.uniprot.org/citations/15620353))

target="_blank">15620353, PubMed:15811342, PubMed:16079794, PubMed:21300290). Acts as a corepressor by mediating demethylation of H3K4me, a specific tag for epigenetic transcriptional activation. Demethylates both mono- (H3K4me1) and di-methylated (H3K4me2) H3K4me (PubMed:15620353, PubMed:20389281, PubMed:21300290, PubMed:23721412). May play a role in the repression of neuronal genes. Alone, it is unable to demethylate H3K4me on nucleosomes and requires the presence of RCOR1/CoREST to achieve such activity (PubMed:16079794, PubMed:16140033, PubMed:16885027, PubMed:21300290, PubMed:23721412). Also acts as a coactivator of androgen receptor (AR)-dependent transcription, by being recruited to AR target genes and mediating demethylation of H3K9me, a specific tag for epigenetic transcriptional repression. The presence of PRKCB in AR-containing complexes, which mediates phosphorylation of 'Thr-6' of histone H3 (H3T6ph), a specific tag that prevents demethylation H3K4me, prevents H3K4me demethylase activity of KDM1A (PubMed:16079795). Demethylates di-methylated 'Lys- 370' of p53/TP53 which prevents interaction of p53/TP53 with TP53BP1 and represses p53/TP53-mediated transcriptional activation. Demethylates and stabilizes the DNA methylase DNMT1 (PubMed:29691401). Demethylates methylated 'Lys-42' and methylated 'Lys-117' of SOX2 (PubMed:29358331). Required for gastrulation during embryogenesis. Component of a RCOR/GFI/KDM1A/HDAC complex that suppresses, via histone deacetylase (HDAC) recruitment, a number of genes implicated in multilineage blood cell development (PubMed:16079794, PubMed:16140033). Facilitates epithelial-to-mesenchymal transition by acting as an effector of SNAI1-mediated transcription repression of epithelial markers E-cadherin/CDH1, CDN7 and KRT8 (PubMed:20562920, PubMed:27292636). Required for the maintenance of the silenced state of the SNAI1 target genes E-cadherin/CDH1 and CDN7 (PubMed:20389281).

Cellular Location

Nucleus. Chromosome. Note=Associates with chromatin

Tissue Location

Ubiquitously expressed.

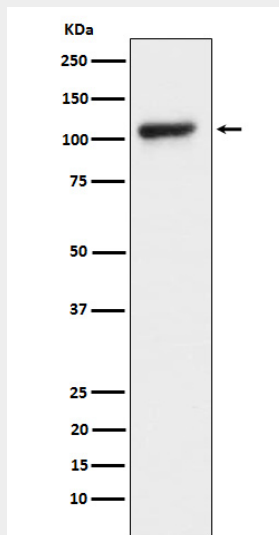
KDM1 / LSD1 Antibody - Protocols

Provided below are standard protocols that you may find useful for product applications.

- [Western Blot](#)
- [Blocking Peptides](#)
- [Dot Blot](#)
- [Immunohistochemistry](#)
- [Immunofluorescence](#)
- [Immunoprecipitation](#)

- [Flow Cytometry](#)
- [Cell Culture](#)

KDM1 / LSD1 Antibody - Images



Western blot analysis of KDM1 / LSD1 expression in HeLa cell lysate.