

DOCK2 Antibody
Rabbit mAb
Catalog # AP92518

Specification

DOCK2 Antibody - Product Information

Application	WB, IHC
Primary Accession	O92608
Clonality	Monoclonal
Other Names	
DOCK 2; IMD40;	
Isotype	Rabbit IgG
Host	Rabbit
Calculated MW	211948 Da

DOCK2 Antibody - Additional Information

Purification	Affinity-chromatography
Immunogen	A synthesized peptide derived from human DOCK2
Description	Involved in cytoskeletal rearrangements required for lymphocyte migration in response of chemokines. Activates RAC1 and RAC2, but not CDC42, by functioning as a guanine nucleotide exchange factor (GEF), which exchanges bound GDP for free GTP.
Storage Condition and Buffer	Rabbit IgG in phosphate buffered saline , pH 7.4, 150mM NaCl, 0.02% sodium azide and 50% glycerol. Store at +4°C short term. Store at -20°C long term. Avoid freeze / thaw cycle.

DOCK2 Antibody - Protein Information

Name DOCK2

Synonyms KIAA0209

Function

Involved in cytoskeletal rearrangements required for lymphocyte migration in response of chemokines. Activates RAC1 and RAC2, but not CDC42, by functioning as a guanine nucleotide exchange factor (GEF), which exchanges bound GDP for free GTP. May also participate in IL2 transcriptional activation via the activation of RAC2.

Cellular Location

Endomembrane system; Peripheral membrane protein. Cytoplasm, cytoskeleton. Note=Colocalizes with F-actin

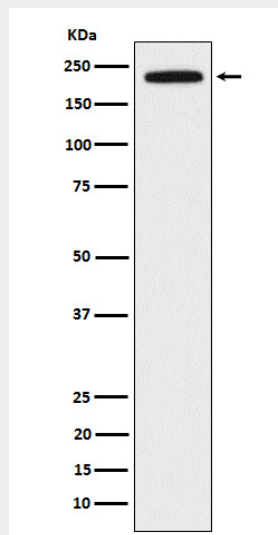
Tissue Location

Specifically expressed in hematopoietic cells. Highly expressed in peripheral blood leukocytes, and expressed at intermediate level in thymus and spleen. Expressed at very low level in the small intestine and colon.

DOCK2 Antibody - Protocols

Provided below are standard protocols that you may find useful for product applications.

- [Western Blot](#)
- [Blocking Peptides](#)
- [Dot Blot](#)
- [Immunohistochemistry](#)
- [Immunofluorescence](#)
- [Immunoprecipitation](#)
- [Flow Cytometry](#)
- [Cell Culture](#)

DOCK2 Antibody - Images

Western blot analysis of DOCK2 expression in Jurkat cell lysate.