

HIRA Antibody
Rabbit mAb
Catalog # AP92496

Specification

HIRA Antibody - Product Information

Application	WB, FC, ICC, IP
Primary Accession	P54198
Clonality	Monoclonal
Other Names	
DGCR1; HIR; HIRA; TUP 1; TUPLE1;	
Isotype	Rabbit IgG
Host	Rabbit
Calculated MW	111835 Da

HIRA Antibody - Additional Information

Purification	Affinity-chromatography
Immunogen	A synthesized peptide derived from human HIRA
Description	Cooperates with ASF1A to promote replication-independent chromatin assembly. Required for the periodic repression of histone gene transcription during the cell cycle.
Storage Condition and Buffer	Rabbit IgG in phosphate buffered saline , pH 7.4, 150mM NaCl, 0.02% sodium azide and 50% glycerol. Store at +4°C short term. Store at -20°C long term. Avoid freeze / thaw cycle.

HIRA Antibody - Protein Information

Name HIRA

Synonyms DGCR1, HIR, TUPLE1

Function

Cooperates with ASF1A to promote replication-independent chromatin assembly. Required for the periodic repression of histone gene transcription during the cell cycle. Required for the formation of senescence-associated heterochromatin foci (SAHF) and efficient senescence-associated cell cycle exit.

Cellular Location

Nucleus. Nucleus, PML body. Note=Primarily, though not exclusively, localized to the nucleus. Localizes to PML bodies immediately prior to onset of senescence

Tissue Location

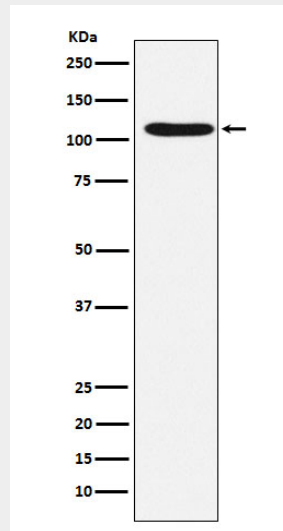
Expressed at high levels in kidney, pancreas and skeletal muscle and at lower levels in brain, heart, liver, lung, and placenta.

HIRA Antibody - Protocols

Provided below are standard protocols that you may find useful for product applications.

- [Western Blot](#)
- [Blocking Peptides](#)
- [Dot Blot](#)
- [Immunohistochemistry](#)
- [Immunofluorescence](#)
- [Immunoprecipitation](#)
- [Flow Cytometry](#)
- [Cell Culture](#)

HIRA Antibody - Images



Western blot analysis of HIRA expression in HeLa cell lysate.