

Inhibin beta A Antibody
Rabbit mAb
Catalog # AP92495**Specification**

Inhibin beta A Antibody - Product Information

Application	WB
Primary Accession	P08476
Reactivity	Rat
Clonality	Monoclonal
Other Names	
EDF; FRP; INHBA;	
Isotype	Rabbit IgG
Host	Rabbit
Calculated MW	47442 Da

Inhibin beta A Antibody - Additional Information

Purification	Affinity-chromatography
Immunogen	A synthesized peptide derived from human Inhibin beta A
Description	Inhibins and activins inhibit and activate, respectively, the secretion of follitropin by the pituitary gland. Inhibins/activins are involved in regulating a number of diverse functions such as hypothalamic and pituitary hormone secretion, gonadal hormone secretion, germ cell development and maturation, erythroid differentiation, insulin secretion, nerve cell survival, embryonic axial development or bone growth, depending on their subunit composition.
Storage Condition and Buffer	Rabbit IgG in phosphate buffered saline , pH 7.4, 150mM NaCl, 0.02% sodium azide and 50% glycerol. Store at +4°C short term. Store at -20°C long term. Avoid freeze / thaw cycle.

Inhibin beta A Antibody - Protein Information**Name** INHBA**Function**

Inhibins and activins inhibit and activate, respectively, the secretion of follitropin by the pituitary gland. Inhibins/activins are involved in regulating a number of diverse functions such as hypothalamic and pituitary hormone secretion, gonadal hormone secretion, germ cell development and maturation, erythroid differentiation, insulin secretion, nerve cell survival,

embryonic axial development or bone growth, depending on their subunit composition. Inhibins appear to oppose the functions of activins.

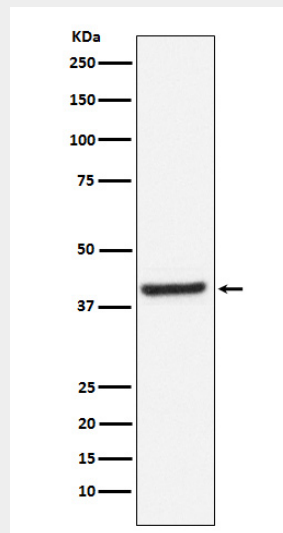
Cellular Location
Secreted.

Inhibin beta A Antibody - Protocols

Provided below are standard protocols that you may find useful for product applications.

- [Western Blot](#)
- [Blocking Peptides](#)
- [Dot Blot](#)
- [Immunohistochemistry](#)
- [Immunofluorescence](#)
- [Immunoprecipitation](#)
- [Flow Cytometry](#)
- [Cell Culture](#)

Inhibin beta A Antibody - Images



Western blot analysis of Inhibin beta A expression in Human fetal brain lysate.