

**PDLIM1 Antibody**  
Rabbit mAb  
Catalog # AP92493

## Specification

---

### PDLIM1 Antibody - Product Information

Application	WB, FC, ICC, IP
Primary Accession	<a href="#">O00151</a>
Reactivity	Rat
Clonality	Monoclonal
<b>Other Names</b>	
CLIM1; CLP36; Elfin; Enigma; hCLIM1; Pdlim1;	
Isotype	Rabbit IgG
Host	Rabbit
Calculated MW	36072 Da

### PDLIM1 Antibody - Additional Information

Purification	Affinity-chromatography
Immunogen	A synthesized peptide derived from human PDLIM1
Description	Cytoskeletal protein that may act as an adapter that brings other proteins (like kinases) to the cytoskeleton.
Storage Condition and Buffer	Rabbit IgG in phosphate buffered saline , pH 7.4, 150mM NaCl, 0.02% sodium azide and 50% glycerol. Store at +4°C short term. Store at -20°C long term. Avoid freeze / thaw cycle.

### PDLIM1 Antibody - Protein Information

**Name** PDLIM1

**Synonyms** CLIM1, CLP36

#### Function

Cytoskeletal protein that may act as an adapter that brings other proteins (like kinases) to the cytoskeleton (PubMed: <http://www.uniprot.org/citations/10861853> target="\_blank">10861853</a>). Involved in assembly, disassembly and directioning of stress fibers in fibroblasts. Required for the localization of ACTN1 and PALLD to stress fibers. Required for cell migration and in maintaining cell polarity of fibroblasts (By similarity).

#### Cellular Location

Cytoplasm. Cytoplasm, cytoskeleton. Cytoplasm, myofibril, sarcomere, Z line Note=Associates with actin stress fibers

#### Tissue Location

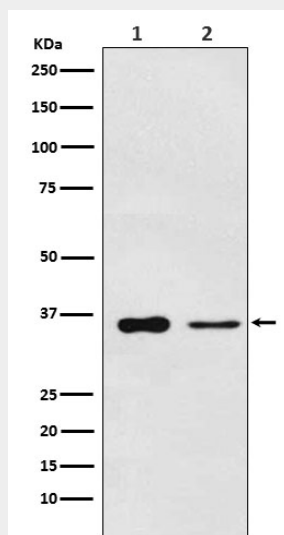
Strongly expressed in the heart and skeletal muscle, moderately expressed in the spleen, small intestine, colon, placenta, and lung. A lower level expression is seen in liver, thymus, kidney, prostate and pancreas and is not found in the brain, testis, ovary, and peripheral blood leukocytes

### **PDLIM1 Antibody - Protocols**

Provided below are standard protocols that you may find useful for product applications.

- [Western Blot](#)
- [Blocking Peptides](#)
- [Dot Blot](#)
- [Immunohistochemistry](#)
- [Immunofluorescence](#)
- [Immunoprecipitation](#)
- [Flow Cytometry](#)
- [Cell Culture](#)

### **PDLIM1 Antibody - Images**



Western blot analysis of PDLIM1 expression in (1) Saos2 cell lysate; (2) Mouse lung lysate.