

DBF4 Antibody
Rabbit mAb
Catalog # AP92478

Specification

DBF4 Antibody - Product Information

Application	WB
Primary Accession	Q9UBU7
Clonality	Monoclonal
Other Names	
ASK; CHIF; DBF4; DBF4 zinc finger A; DBF4A; ZDBF1;	
Isotype	Rabbit IgG
Host	Rabbit
Calculated MW	76858 Da

DBF4 Antibody - Additional Information

Purification	Affinity-chromatography
Immunogen	A synthesized peptide derived from human DBF4
Description	Regulatory subunit for CDC7 which activates its kinase activity thereby playing a central role in DNA replication and cell proliferation. Required for progression of S phase. The complex CDC7-DBF4A selectively phosphorylates MCM2 subunit at 'Ser-40' and 'Ser-53' and then is involved in regulating the initiation of DNA replication during cell cycle.
Storage Condition and Buffer	Rabbit IgG in phosphate buffered saline , pH 7.4, 150mM NaCl, 0.02% sodium azide and 50% glycerol. Store at +4°C short term. Store at -20°C long term. Avoid freeze / thaw cycle.

DBF4 Antibody - Protein Information

Name DBF4

Synonyms ASK, DBF4A, ZDBF1

Function

Regulatory subunit for CDC7 which activates its kinase activity thereby playing a central role in DNA replication and cell proliferation. Required for progression of S phase. The complex CDC7-DBF4A selectively phosphorylates MCM2 subunit at 'Ser-40' and 'Ser-53' and then is involved in regulating the initiation of DNA replication during cell cycle.

Cellular Location

Nucleus.

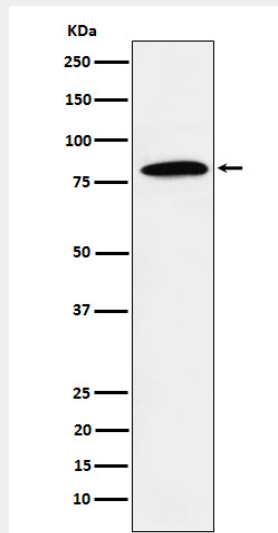
Tissue Location

Highly expressed in testis and thymus. Expressed also in most cancer cells lines.

DBF4 Antibody - Protocols

Provided below are standard protocols that you may find useful for product applications.

- [Western Blot](#)
- [Blocking Peptides](#)
- [Dot Blot](#)
- [Immunohistochemistry](#)
- [Immunofluorescence](#)
- [Immunoprecipitation](#)
- [Flow Cytometry](#)
- [Cell Culture](#)

DBF4 Antibody - Images

Western blot analysis of DBF4 expression in Jurkat cell lysate.