

Cystatin A Antibody
Rabbit mAb
Catalog # AP92474**Specification**

Cystatin A Antibody - Product Information

Application	WB, FC
Primary Accession	P01040
Reactivity	Rat
Clonality	Monoclonal
Other Names	
AREI; cstA; Cystatin A; Cystatin AS; Stefin A; STF1; STFA;	
Isotype	Rabbit IgG
Host	Rabbit
Calculated MW	11006 Da

Cystatin A Antibody - Additional Information

Purification	Affinity-chromatography
Immunogen	A synthesized peptide derived from human Cystatin A
Description	This is an intracellular thiol proteinase inhibitor.
Storage Condition and Buffer	Rabbit IgG in phosphate buffered saline , pH 7.4, 150mM NaCl, 0.02% sodium azide and 50% glycerol. Store at +4°C short term. Store at -20°C long term. Avoid freeze / thaw cycle.

Cystatin A Antibody - Protein Information**Name** CSTA**Synonyms** STF1, STFA**Function**

This is an intracellular thiol proteinase inhibitor. Has an important role in desmosome-mediated cell-cell adhesion in the lower levels of the epidermis.

Cellular Location

Cytoplasm.

Tissue Location

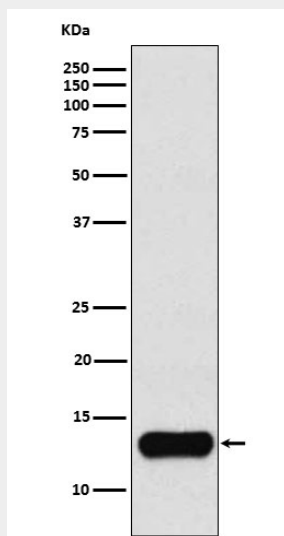
Expressed in the skin throughout the epidermis.

Cystatin A Antibody - Protocols

Provided below are standard protocols that you may find useful for product applications.

- [Western Blot](#)
- [Blocking Peptides](#)
- [Dot Blot](#)
- [Immunohistochemistry](#)
- [Immunofluorescence](#)
- [Immunoprecipitation](#)
- [Flow Cytometry](#)
- [Cell Culture](#)

Cystatin A Antibody - Images



Western blot analysis of Cystatin A expression in K562 cell lysate.