

**Hippocalcin Antibody**  
Rabbit mAb  
Catalog # AP92470**Specification****Hippocalcin Antibody - Product Information**

Application	WB
Primary Accession	<a href="#">P84074</a>
Reactivity	Rat
Clonality	Monoclonal
<b>Other Names</b>	
BDR2; HPCA; P23K;	
Isotype	Rabbit IgG
Host	Rabbit
Calculated MW	22427 Da

**Hippocalcin Antibody - Additional Information**

Purification	<b>Affinity-chromatography</b>
Immunogen	<b>A synthesized peptide derived from human Hippocalcin</b>
Description	<b>May be involved in the calcium-dependent regulation of rhodopsin phosphorylation. Binds two calcium ions.</b>
Storage Condition and Buffer	<b>Rabbit IgG in phosphate buffered saline , pH 7.4, 150mM NaCl, 0.02% sodium azide and 50% glycerol. Store at +4°C short term. Store at -20°C long term. Avoid freeze / thaw cycle.</b>

**Hippocalcin Antibody - Protein Information**Name HPCA ([HGNC:5144](#))

Synonyms BDR2

**Function**

Calcium-binding protein that may play a role in the regulation of voltage-dependent calcium channels (PubMed:<a href="http://www.uniprot.org/citations/28398555" target="\_blank">28398555</a>). May also play a role in cyclic-nucleotide-mediated signaling through the regulation of adenylate and guanylate cyclases (By similarity).

**Cellular Location**

Cytoplasm, cytosol {ECO:0000250|UniProtKB:P84076, ECO:0000269|PubMed:28398555}.  
Membrane {ECO:0000250|UniProtKB:P84076}; Peripheral membrane protein {ECO:0000250|UniProtKB:P84076} Note=Association with membranes is calcium-dependent (By similarity) Enriched in the perinuclear region, probably at the trans Golgi network in response to calcium (PubMed:28398555) {ECO:0000250|UniProtKB:P84076, ECO:0000269|PubMed:28398555}

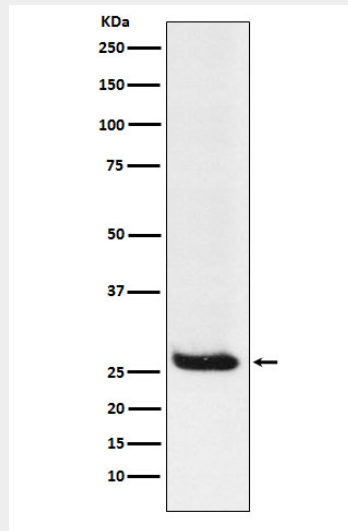
**Tissue Location**

Brain specific..

**Hippocalcin Antibody - Protocols**

Provided below are standard protocols that you may find useful for product applications.

- [Western Blot](#)
- [Blocking Peptides](#)
- [Dot Blot](#)
- [Immunohistochemistry](#)
- [Immunofluorescence](#)
- [Immunoprecipitation](#)
- [Flow Cytometry](#)
- [Cell Culture](#)

**Hippocalcin Antibody - Images**

Western blot analysis of Hippocalcin expression in Neuro2a cell lysate.