

**CLPP Antibody**  
Rabbit mAb  
Catalog # AP92459

## Specification

---

### CLPP Antibody - Product Information

Application	WB, IHC, IP
Primary Accession	<a href="#">Q16740</a>
Reactivity	Rat
Clonality	Monoclonal
<b>Other Names</b>	
Endopeptidase Clp;	
Isotype	Rabbit IgG
Host	Rabbit
Calculated MW	30180 Da

### CLPP Antibody - Additional Information

Purification	<b>Affinity-chromatography</b>
Immunogen	<b>A synthesized peptide derived from human CLPP</b>
Description	<b>Clp cleaves peptides in various proteins in a process that requires ATP hydrolysis. Clp may be responsible for a fairly general and central housekeeping function rather than for the degradation of specific substrates. Rabbit IgG in phosphate buffered saline , pH 7.4, 150mM NaCl, 0.02% sodium azide and 50% glycerol. Store at +4°C short term. Store at -20°C long term. Avoid freeze / thaw cycle.</b>
Storage Condition and Buffer	

### CLPP Antibody - Protein Information

**Name** CLPP ([HGNC:2084](#))

#### Function

Protease component of the ClpXP complex that cleaves peptides and various proteins in an ATP-dependent process. Has low peptidase activity in the absence of CLPX. The ClpXP complex can degrade CSN1S1, CSN2 and CSN3, as well as synthetic peptides (in vitro) and may be responsible for a fairly general and central housekeeping function rather than for the degradation of specific substrates (PubMed: [11923310](http://www.uniprot.org/citations/11923310), PubMed: [15522782](http://www.uniprot.org/citations/15522782)). Cleaves PINK1 in the mitochondrion (PubMed: [22354088](http://www.uniprot.org/citations/22354088)).

#### Cellular Location

Mitochondrion matrix

### Tissue Location

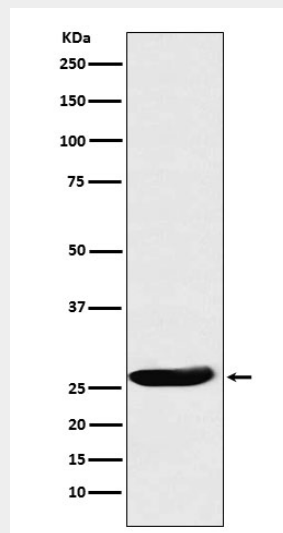
Detected in liver (at protein level). Predominantly expressed in skeletal muscle. Intermediate levels in heart, liver and pancreas. Low in brain, placenta, lung and kidney

### CLPP Antibody - Protocols

Provided below are standard protocols that you may find useful for product applications.

- [Western Blot](#)
- [Blocking Peptides](#)
- [Dot Blot](#)
- [Immunohistochemistry](#)
- [Immunofluorescence](#)
- [Immunoprecipitation](#)
- [Flow Cytometry](#)
- [Cell Culture](#)

### CLPP Antibody - Images



Western blot analysis of CLPP expression in A431 cell lysate.