

KLK2 Antibody
Rabbit mAb
Catalog # AP92456

Specification

KLK2 Antibody - Product Information

Application	WB, ICC
Primary Accession	P20151
Reactivity	Rat
Clonality	Monoclonal
Other Names	
hK2; hGK-1; KLK2A2;	
Isotype	Rabbit IgG
Host	Rabbit
Calculated MW	28671 Da

KLK2 Antibody - Additional Information

Purification	Affinity-chromatography
Immunogen	A synthesized peptide derived from human KLK2
Description	Glandular kallikreins cleave Met-Lys and Arg-Ser bonds in kininogen to release Lys-bradykinin.
Storage Condition and Buffer	Rabbit IgG in phosphate buffered saline , pH 7.4, 150mM NaCl, 0.02% sodium azide and 50% glycerol. Store at +4°C short term. Store at -20°C long term. Avoid freeze / thaw cycle.

KLK2 Antibody - Protein Information

Name KLK2

Function

Glandular kallikreins cleave Met-Lys and Arg-Ser bonds in kininogen to release Lys-bradykinin.

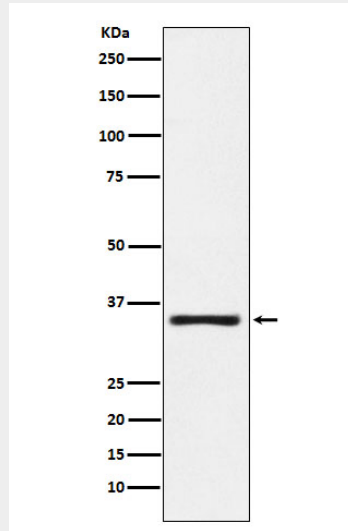
KLK2 Antibody - Protocols

Provided below are standard protocols that you may find useful for product applications.

- [Western Blot](#)
- [Blocking Peptides](#)
- [Dot Blot](#)
- [Immunohistochemistry](#)
- [Immunofluorescence](#)

- [Immunoprecipitation](#)
- [Flow Cytometry](#)
- [Cell Culture](#)

KLK2 Antibody - Images



Western blot analysis of KLK2 expression in MOLT4 cell lysate.