

**ZNF217 Antibody**  
Rabbit mAb  
Catalog # AP92452

## Specification

---

### ZNF217 Antibody - Product Information

Application	WB
Primary Accession	<a href="#">O75362</a>
Clonality	Monoclonal
<b>Other Names</b>	
ZABC1; ZN217; ZNF217;	
Isotype	Rabbit IgG
Host	Rabbit
Calculated MW	115272 Da

### ZNF217 Antibody - Additional Information

Purification	Affinity-chromatography
Immunogen	A synthesized peptide derived from human ZNF217
Description	Binds to the promoters of target genes and functions as repressor. Promotes cell proliferation and antagonizes cell death. Promotes phosphorylation of AKT1 at 'Ser-473'.
Storage Condition and Buffer	Rabbit IgG in phosphate buffered saline , pH 7.4, 150mM NaCl, 0.02% sodium azide and 50% glycerol. Store at +4°C short term. Store at -20°C long term. Avoid freeze / thaw cycle.

### ZNF217 Antibody - Protein Information

**Name** ZNF217

**Synonyms** ZABC1

#### Function

Binds to the promoters of target genes and functions as repressor. Promotes cell proliferation and antagonizes cell death. Promotes phosphorylation of AKT1 at 'Ser-473'.

#### Cellular Location

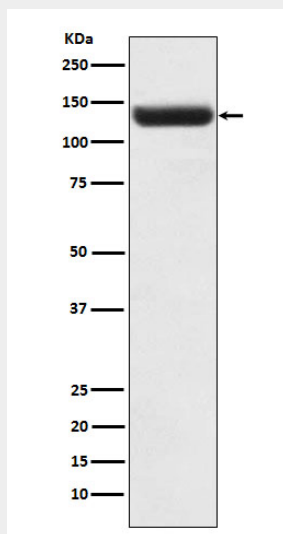
Nucleus.

### ZNF217 Antibody - Protocols

Provided below are standard protocols that you may find useful for product applications.

- [Western Blot](#)
- [Blocking Peptides](#)
- [Dot Blot](#)
- [Immunohistochemistry](#)
- [Immunofluorescence](#)
- [Immunoprecipitation](#)
- [Flow Cytometry](#)
- [Cell Culture](#)

#### ZNF217 Antibody - Images



Western blot analysis of ZNF217 expression in Caco2 cell lysate.