

TMEFF2 Antibody
Rabbit mAb
Catalog # AP92449

Specification

TMEFF2 Antibody - Product Information

| | |
|---|------------------------|
| Application | WB, IHC, FC, ICC |
| Primary Accession | O9UIK5 |
| Clonality | Monoclonal |
| Other Names | |
| TMEFF2; HPP1; TPEF; TR-2; Tomoregulin; TENB2; Tomoregulin-2; CT120.2; | |
| Isotype | Rabbit IgG |
| Host | Rabbit |
| Calculated MW | 41428 Da |

TMEFF2 Antibody - Additional Information

| | |
|------------------------------|---|
| Purification | Affinity-chromatography |
| Immunogen | A synthesized peptide derived from human TMEFF2 |
| Description | May be a survival factor for hippocampal and mesencephalic neurons. The shedded form up-regulates cancer cell proliferation, probably by promoting ERK1/2 phosphorylation. |
| Storage Condition and Buffer | Rabbit IgG in phosphate buffered saline , pH 7.4, 150mM NaCl, 0.02% sodium azide and 50% glycerol. Store at +4°C short term. Store at -20°C long term. Avoid freeze / thaw cycle. |

TMEFF2 Antibody - Protein Information

Name TMEFF2

Synonyms HPP1, TENB2, TPEF

Function

May be a survival factor for hippocampal and mesencephalic neurons. The shedded form up-regulates cancer cell proliferation, probably by promoting ERK1/2 phosphorylation.

Cellular Location

[Isoform 1]: Membrane; Single-pass type I membrane protein [Isoform 3]: Secreted.

Tissue Location

Highly expressed in adult and fetal brain, spinal cord and prostate. Expressed in all brain regions except the pituitary gland, with highest levels in amygdala and corpus callosum. Expressed in the pericyptal myofibroblasts and other stromal cells of normal colonic mucosa. Expressed in prostate

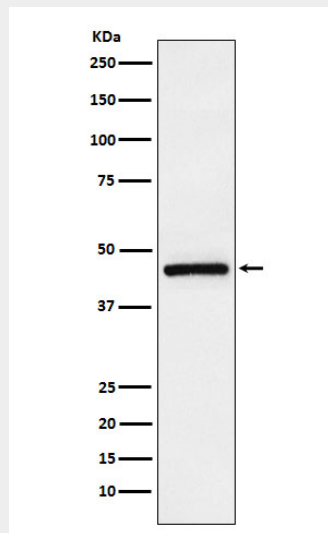
carcinoma. Down-regulated in colorectal cancer. Present in Alzheimer disease plaques (at protein level). Isoform 3 is expressed weakly in testis and at high levels in normal and cancerous prostate.

TMEFF2 Antibody - Protocols

Provided below are standard protocols that you may find useful for product applications.

- [Western Blot](#)
- [Blocking Peptides](#)
- [Dot Blot](#)
- [Immunohistochemistry](#)
- [Immunofluorescence](#)
- [Immunoprecipitation](#)
- [Flow Cytometry](#)
- [Cell Culture](#)

TMEFF2 Antibody - Images



Western blot analysis of TMEFF2 expression in LnCaP cell lysate.