

**FRA2 Antibody**  
Rabbit mAb  
Catalog # AP92448

## Specification

---

### FRA2 Antibody - Product Information

Application	WB, FC, IP
Primary Accession	<a href="#">P15408</a>
Reactivity	Rat
Clonality	Monoclonal
<b>Other Names</b>	
Fos L2; FosL2; FRA 2;	
Isotype	Rabbit IgG
Host	Rabbit
Calculated MW	35193 Da

### FRA2 Antibody - Additional Information

Purification	Affinity-chromatography
Immunogen	A synthesized peptide derived from human FRA2
Description	Controls osteoclast survival and size (By similarity). As a dimer with JUN, activates LIF transcription (By similarity). Activates CEBPB transcription in PGE2-activated osteoblasts.
Storage Condition and Buffer	Rabbit IgG in phosphate buffered saline , pH 7.4, 150mM NaCl, 0.02% sodium azide and 50% glycerol. Store at +4°C short term. Store at -20°C long term. Avoid freeze / thaw cycle.

### FRA2 Antibody - Protein Information

**Name** FOSL2

**Synonyms** FRA2

#### Function

Controls osteoclast survival and size (By similarity). As a dimer with JUN, activates LIF transcription (By similarity). Activates CEBPB transcription in PGE2-activated osteoblasts (By similarity).

#### Cellular Location

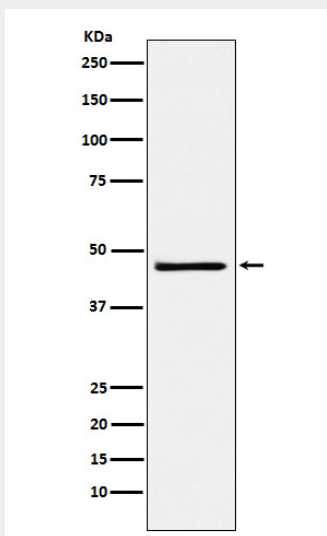
Nucleus {ECO:0000250|UniProtKB:P51145}.

### FRA2 Antibody - Protocols

Provided below are standard protocols that you may find useful for product applications.

- [Western Blot](#)
- [Blocking Peptides](#)
- [Dot Blot](#)
- [Immunohistochemistry](#)
- [Immunofluorescence](#)
- [Immunoprecipitation](#)
- [Flow Cytometry](#)
- [Cell Culture](#)

#### **FRA2 Antibody - Images**



Western blot analysis of FRA2 expression in NCCIT cell lysate.