

**RAD52 Antibody**  
Rabbit mAb  
Catalog # AP92447

## Specification

---

### RAD52 Antibody - Product Information

|                       |                        |
|-----------------------|------------------------|
| Application           | WB                     |
| Primary Accession     | <a href="#">P43351</a> |
| Clonality             | Monoclonal             |
| <b>Other Names</b>    |                        |
| Rad52; RAD52 homolog; |                        |
| Isotype               | Rabbit IgG             |
| Host                  | Rabbit                 |
| Calculated MW         | 46169 Da               |

### RAD52 Antibody - Additional Information

|                              |   |
|------------------------------|---|
| Purification                 | Affinity-chromatography   |
| Immunogen                    | A synthesized peptide derived from human RAD52  |
| Description                  | Involved in double-stranded break repair. Plays a central role in genetic recombination and DNA repair by promoting the annealing of complementary single-stranded DNA and by stimulation of the RAD51 recombinase. |
| Storage Condition and Buffer | Rabbit IgG in phosphate buffered saline , pH 7.4, 150mM NaCl, 0.02% sodium azide and 50% glycerol. Store at +4°C short term. Store at -20°C long term. Avoid freeze / thaw cycle.                                   |

### RAD52 Antibody - Protein Information

**Name** RAD52

#### Function

Involved in double-stranded break repair. Plays a central role in genetic recombination and DNA repair by promoting the annealing of complementary single-stranded DNA and by stimulation of the RAD51 recombinase.

#### Cellular Location

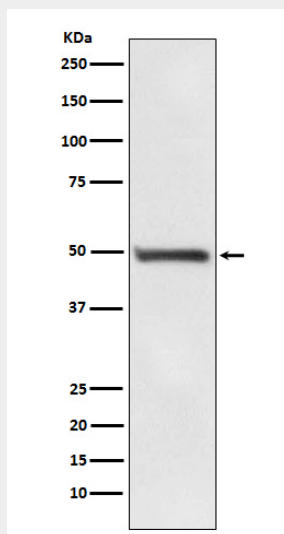
Nucleus.

### RAD52 Antibody - Protocols

Provided below are standard protocols that you may find useful for product applications.

- [Western Blot](#)
- [Blocking Peptides](#)
- [Dot Blot](#)
- [Immunohistochemistry](#)
- [Immunofluorescence](#)
- [Immunoprecipitation](#)
- [Flow Cytometry](#)
- [Cell Culture](#)

#### **RAD52 Antibody - Images**



Western blot analysis of RAD52 expression in PC3 cell lysate.