

RYP Antibody
Rabbit mAb
Catalog # AP92445

Specification

RYP Antibody - Product Information

Application	WB, IHC, FC, ICC, IP
Primary Accession	P34925
Clonality	Monoclonal
Other Names	
ERK 3; JTK5; JTK5A; Ryk; RYP1; Vik;	

Isotype	Rabbit IgG
Host	Rabbit
Calculated MW	67815 Da

RYP Antibody - Additional Information

Purification	Affinity-chromatography
Immunogen	A synthesized peptide derived from human RYP
Description	May be a coreceptor along with FZD8 of Wnt proteins, such as WNT1, WNT3, WNT3A and WNT5A. Involved in neuron differentiation, axon guidance, corpus callosum establishment and neurite outgrowth. In response to WNT3 stimulation, receptor C-terminal cleavage occurs in its transmembrane region and allows the C-terminal intracellular product to translocate from the cytoplasm to the nucleus where it plays a crucial role in neuronal development.
Storage Condition and Buffer	Rabbit IgG in phosphate buffered saline , pH 7.4, 150mM NaCl, 0.02% sodium azide and 50% glycerol. Store at +4°C short term. Store at -20°C long term. Avoid freeze / thaw cycle.

RYP Antibody - Protein Information

Name RYP ([HGNC:10481](#))

Synonyms JTK5A

Function

May be a coreceptor along with FZD8 of Wnt proteins, such as WNT1, WNT3, WNT3A and WNT5A. Involved in neuron differentiation, axon guidance, corpus callosum establishment and neurite outgrowth. In response to WNT3 stimulation, receptor C-terminal cleavage occurs in its

transmembrane region and allows the C-terminal intracellular product to translocate from the cytoplasm to the nucleus where it plays a crucial role in neuronal development.

Cellular Location

Membrane; Single-pass type I membrane protein. Nucleus. Cytoplasm. Note=In cells that have undergone neuronal differentiation, the C-terminal cleaved part is translocated from the cytoplasm to the nucleus.

Tissue Location

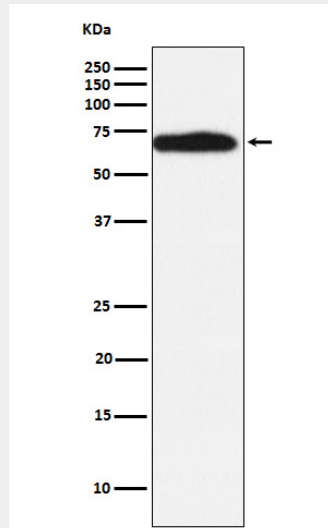
Observed in all the tissues examined.

RYK Antibody - Protocols

Provided below are standard protocols that you may find useful for product applications.

- [Western Blot](#)
- [Blocking Peptides](#)
- [Dot Blot](#)
- [Immunohistochemistry](#)
- [Immunofluorescence](#)
- [Immunoprecipitation](#)
- [Flow Cytometry](#)
- [Cell Culture](#)

RYK Antibody - Images



Western blot analysis of RYK expression in MCF7 cell lysate.