

PLCB3 Antibody
Rabbit mAb
Catalog # AP92439

Specification

PLCB3 Antibody - Product Information

Application	WB, IHC
Primary Accession	Q01970
Clonality	Monoclonal
Other Names	
Phosphoinositide phospholipase C; Phospholipase C beta 3; PLC beta 3; Plcb3;	
Isotype	Rabbit IgG
Host	Rabbit
Calculated MW	138799 Da

PLCB3 Antibody - Additional Information

Purification	Affinity-chromatography
Immunogen	A synthesized peptide derived from human PLCB3
Description	The production of the second messenger molecules diacylglycerol (DAG) and inositol 1,4,5-trisphosphate (IP3) is mediated by activated phosphatidylinositol-specific phospholipase C enzymes.
Storage Condition and Buffer	Rabbit IgG in phosphate buffered saline , pH 7.4, 150mM NaCl, 0.02% sodium azide and 50% glycerol. Store at +4°C short term. Store at -20°C long term. Avoid freeze / thaw cycle.

PLCB3 Antibody - Protein Information

Name PLCB3 {ECO:0000312|EMBL:AAA77683.1}

Function

The production of the second messenger molecules diacylglycerol (DAG) and inositol 1,4,5-trisphosphate (IP3) is mediated by activated phosphatidylinositol-specific phospholipase C enzymes (PubMed:29122926, PubMed:9188725). In neutrophils, participates in a phospholipase C-activating N-formyl peptide-activated GPCR (G protein- coupled receptor) signaling pathway by promoting RASGRP4 activation by DAG, to promote neutrophil functional responses (By similarity).

Cellular Location

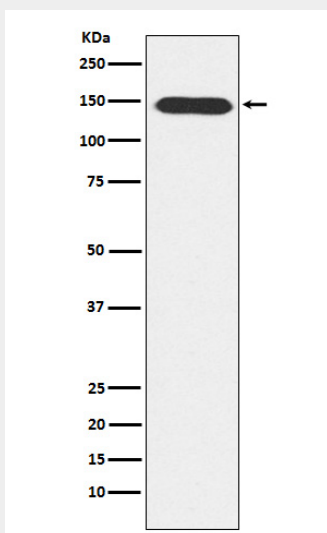
Cytoplasm. Membrane {ECO:0000250|UniProtKB:Q99JE6}. Nucleus {ECO:0000250|UniProtKB:P51432} Note=And particulate fractions. {ECO:0000250|UniProtKB:Q99JE6}

PLCB3 Antibody - Protocols

Provided below are standard protocols that you may find useful for product applications.

- [Western Blot](#)
- [Blocking Peptides](#)
- [Dot Blot](#)
- [Immunohistochemistry](#)
- [Immunofluorescence](#)
- [Immunoprecipitation](#)
- [Flow Cytometry](#)
- [Cell Culture](#)

PLCB3 Antibody - Images



Western blot analysis of PLCB3 expression in A431 cell lysate.