

STC1 Antibody
Rabbit mAb
Catalog # AP92437

Specification

STC1 Antibody - Product Information

Application	WB, IP
Primary Accession	P52823
Clonality	Monoclonal
Other Names	
Stanniocalcin; STC; STC-1; Stc1;	
Isotype	Rabbit IgG
Host	Rabbit
Calculated MW	27621 Da

STC1 Antibody - Additional Information

Purification	Affinity-chromatography
Immunogen	A synthesized peptide derived from human STC1
Description	Stimulates renal phosphate reabsorption, and could therefore prevent hypercalcemia.
Storage Condition and Buffer	Rabbit IgG in phosphate buffered saline , pH 7.4, 150mM NaCl, 0.02% sodium azide and 50% glycerol. Store at +4°C short term. Store at -20°C long term. Avoid freeze / thaw cycle.

STC1 Antibody - Protein Information

Name STC1

Synonyms STC

Function

Stimulates renal phosphate reabsorption, and could therefore prevent hypercalcemia.

Cellular Location

Secreted.

Tissue Location

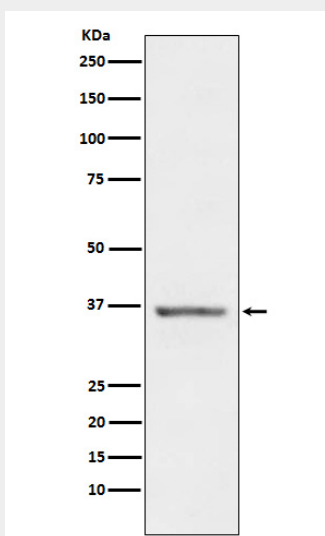
Expressed in most tissues, with the highest levels in ovary, prostate, heart, kidney and thyroid. In the kidney, expression is confined to the nephron, specifically in the distal convoluted tubule and in the collecting tubule. Not detected in the brain, liver, spleen, peripheral blood leukocytes and adrenal medulla

STC1 Antibody - Protocols

Provided below are standard protocols that you may find useful for product applications.

- [Western Blot](#)
- [Blocking Peptides](#)
- [Dot Blot](#)
- [Immunohistochemistry](#)
- [Immunofluorescence](#)
- [Immunoprecipitation](#)
- [Flow Cytometry](#)
- [Cell Culture](#)

STC1 Antibody - Images



Western blot analysis of STC1 expression in Human Prostate lysate.