

PLCG2 Antibody
Rabbit mAb
Catalog # AP92435

Specification

PLCG2 Antibody - Product Information

Application	WB, IHC, FC, IP
Primary Accession	P16885
Clonality	Monoclonal
Other Names	
PLC 2; PLC gamma 2; PLC IV; PLC-IV; Plcg2;	
Isotype	Rabbit IgG
Host	Rabbit
Calculated MW	147870 Da

PLCG2 Antibody - Additional Information

Purification	Affinity-chromatography
Immunogen	A synthesized peptide derived from human PLCG2
Description	The production of the second messenger molecules diacylglycerol (DAG) and inositol 1,4,5-trisphosphate (IP3) is mediated by activated phosphatidylinositol-specific phospholipase C enzymes. It is a crucial enzyme in transmembrane signaling.
Storage Condition and Buffer	Rabbit IgG in phosphate buffered saline , pH 7.4, 150mM NaCl, 0.02% sodium azide and 50% glycerol. Store at +4°C short term. Store at -20°C long term. Avoid freeze / thaw cycle.

PLCG2 Antibody - Protein Information

Name PLCG2 ([HGNC:9066](#))

Function

The production of the second messenger molecules diacylglycerol (DAG) and inositol 1,4,5-trisphosphate (IP3) is mediated by activated phosphatidylinositol-specific phospholipase C enzymes. It is a crucial enzyme in transmembrane signaling.

Cellular Location

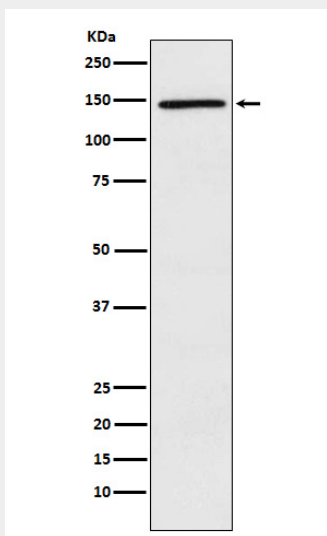
Membrane raft {ECO:0000250|UniProtKB:Q8CIH5}.

PLCG2 Antibody - Protocols

Provided below are standard protocols that you may find useful for product applications.

- [Western Blot](#)
- [Blocking Peptides](#)
- [Dot Blot](#)
- [Immunohistochemistry](#)
- [Immunofluorescence](#)
- [Immunoprecipitation](#)
- [Flow Cytometry](#)
- [Cell Culture](#)

PLCG2 Antibody - Images



Western blot analysis of PLCG 2 expression in Ramos cell lysate.