

Thromboxane synthase Antibody
Rabbit mAb
Catalog # AP92425**Specification****Thromboxane synthase Antibody - Product Information**

Application	WB
Primary Accession	P24557
Clonality	Monoclonal
Other Names	
TS; TXS; CYP5; THAS; TXAS; CYP5A1; GHOSAL; BDPLT14;	
Isotype	Rabbit IgG
Host	Rabbit
Calculated MW	60518 Da

Thromboxane synthase Antibody - Additional Information

Purification	Affinity-chromatography
Immunogen	A synthesized peptide derived from human Thromboxane synthase
Description	This gene encodes a member of the cytochrome P450 superfamily of enzymes. The cytochrome P450 proteins are monooxygenases which catalyze many reactions involved in drug metabolism and synthesis of cholesterol, steroids and other lipids.
Storage Condition and Buffer	Rabbit IgG in phosphate buffered saline , pH 7.4, 150mM NaCl, 0.02% sodium azide and 50% glycerol. Store at +4°C short term. Store at -20°C long term. Avoid freeze / thaw cycle.

Thromboxane synthase Antibody - Protein Information**Name** TBXAS1**Synonyms** CYP5, CYP5A1 {ECO:0000303|PubMed:1146554}**Function**

Catalyzes the conversion of prostaglandin H2 (PGH2) to thromboxane A2 (TXA2), a potent inducer of blood vessel constriction and platelet aggregation (PubMed:11097184, PubMed:11297515, PubMed:22735388, PubMed:24009185, PubMed:8436233, PubMed:9873013). Cleaves also

PGH2 to 12-hydroxy-heptadecatrienoic acid (12-HHT) and malondialdehyde, which is known to act as a mediator of DNA damage. 12-HHT and malondialdehyde are formed stoichiometrically in the same amounts as TXA2 (PubMed: [11297515](http://www.uniprot.org/citations/11297515), PubMed: [22735388](http://www.uniprot.org/citations/22735388), PubMed: [9873013](http://www.uniprot.org/citations/9873013)). Additionally, displays dehydratase activity, toward (15S)-hydroperoxy-(5Z,8Z,11Z,13E)-eicosatetraenoate (15(S)-HPETE) producing 15-KETE and 15-HETE (PubMed: [17459323](http://www.uniprot.org/citations/17459323)).

Cellular Location

Endoplasmic reticulum membrane; Multi-pass membrane protein

Tissue Location

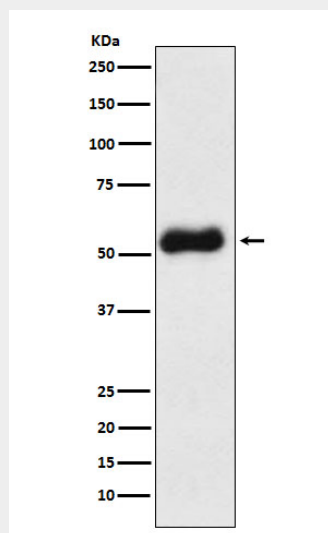
Platelets, lung, kidney, spleen, macrophages and lung fibroblasts.

Thromboxane synthase Antibody - Protocols

Provided below are standard protocols that you may find useful for product applications.

- [Western Blot](#)
- [Blocking Peptides](#)
- [Dot Blot](#)
- [Immunohistochemistry](#)
- [Immunofluorescence](#)
- [Immunoprecipitation](#)
- [Flow Cytometry](#)
- [Cell Culture](#)

Thromboxane synthase Antibody - Images



Western blot analysis of Thromboxane synthase expression in Human fetal liver lysate.