

**Tbx3 Antibody**  
Rabbit mAb  
Catalog # AP92421

## Specification

---

### Tbx3 Antibody - Product Information

Application	WB, FC, IP
Primary Accession	<a href="#">O15119</a>
Reactivity	Rat
Clonality	Monoclonal

#### Other Names

T box 3; T-box protein 3; Tbx3; TBX3 ISO; UMS; XHL;

Isotype	Rabbit IgG
Host	Rabbit
Calculated MW	79389 Da

### Tbx3 Antibody - Additional Information

Purification	Affinity-chromatography
Immunogen	A synthesized peptide derived from human Tbx3
Description	Transcriptional repressor involved in developmental processes. Probably plays a role in limb pattern formation.
Storage Condition and Buffer	Rabbit IgG in phosphate buffered saline , pH 7.4, 150mM NaCl, 0.02% sodium azide and 50% glycerol. Store at +4°C short term. Store at -20°C long term. Avoid freeze / thaw cycle.

### Tbx3 Antibody - Protein Information

**Name** TBX3

#### Function

Transcriptional repressor involved in developmental processes (PubMed:[10468588](http://www.uniprot.org/citations/10468588)). Binds to the palindromic T site 5'- TTCACACCTAGGTGTGAA-3' DNA sequence, or a half-site, which are present in the regulatory region of several genes (PubMed:[12000749](http://www.uniprot.org/citations/12000749)). Probably plays a role in limb pattern formation (PubMed:[10468588](http://www.uniprot.org/citations/10468588)). Required for mammary placode induction, and maintenance of the mammary buds during development (By similarity). Involved in branching morphogenesis in both developing lungs and adult mammary glands, via negative modulation of target genes; acting redundantly with TBX2 (By similarity). Required, together with TBX2, to maintain cell proliferation in the embryonic lung mesenchyme; perhaps acting downstream of SHH, BMP and TGFbeta signaling (By similarity). Involved in modulating early inner ear development, acting independently of, and also redundantly with, TBX2

in different subregions of the developing ear (By similarity). Acts as a negative regulator of PML function in cellular senescence (PubMed:<a href="http://www.uniprot.org/citations/22002537" target="\_blank">22002537</a>).

#### Cellular Location

Nucleus {ECO:0000255|PROSITE-ProRule:PRU00201}.

#### Tissue Location

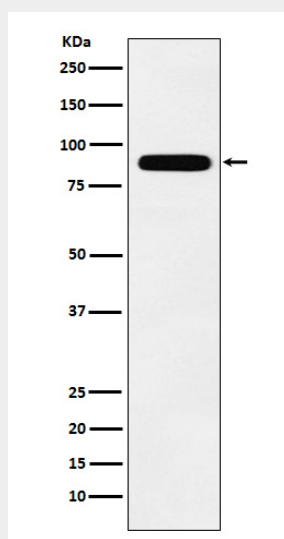
Widely expressed.

### Tbx3 Antibody - Protocols

Provided below are standard protocols that you may find useful for product applications.

- [Western Blot](#)
- [Blocking Peptides](#)
- [Dot Blot](#)
- [Immunohistochemistry](#)
- [Immunofluorescence](#)
- [Immunoprecipitation](#)
- [Flow Cytometry](#)
- [Cell Culture](#)

### Tbx3 Antibody - Images



Western blot analysis of Tbx3 expression in MCF7 cell lysate.