

CHRNA5 Antibody
Rabbit mAb
Catalog # AP92420

Specification

CHRNA5 Antibody - Product Information

Application	WB, FC, IP
Primary Accession	P30532
Reactivity	Rat
Clonality	Monoclonal
Other Names	
AChR; CHRNA5; LNCR2; NACHRA5;	
Isotype	Rabbit IgG
Host	Rabbit
Calculated MW	53054 Da

CHRNA5 Antibody - Additional Information

Purification	Affinity-chromatography
Immunogen	A synthesized peptide derived from human CHRNA5
Description	After binding acetylcholine, the AChR responds by an extensive change in conformation that affects all subunits and leads to opening of an ion-conducting channel across the plasma membrane.
Storage Condition and Buffer	Rabbit IgG in phosphate buffered saline , pH 7.4, 150mM NaCl, 0.02% sodium azide and 50% glycerol. Store at +4°C short term. Store at -20°C long term. Avoid freeze / thaw cycle.

CHRNA5 Antibody - Protein Information

Name CHRNA5

Synonyms NACHRA5

Function

After binding acetylcholine, the AChR responds by an extensive change in conformation that affects all subunits and leads to opening of an ion-conducting channel across the plasma membrane.

Cellular Location

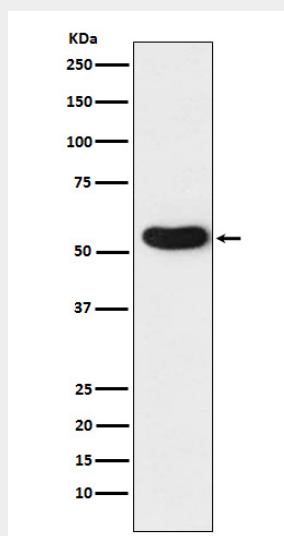
Postsynaptic cell membrane; Multi-pass membrane protein. Cell membrane; Multi-pass membrane protein

CHRNA5 Antibody - Protocols

Provided below are standard protocols that you may find useful for product applications.

- [Western Blot](#)
- [Blocking Peptides](#)
- [Dot Blot](#)
- [Immunohistochemistry](#)
- [Immunofluorescence](#)
- [Immunoprecipitation](#)
- [Flow Cytometry](#)
- [Cell Culture](#)

CHRNA5 Antibody - Images



Western blot analysis of CHRNA5 expression in A431 cell lysate.