

LEFTY1 + LEFTY2 Antibody
Rabbit mAb
Catalog # AP92419

Specification

LEFTY1 + LEFTY2 Antibody - Product Information

Application	WB, IP
Primary Accession	O00292
Reactivity	Rat
Clonality	Monoclonal
Other Names	
EBAF; LEFTA; LEFTB; LEFTY1; LEFTYA; LEFTYB; PSEC0024; TGFB4;	
Isotype	Rabbit IgG
Host	Rabbit
Calculated MW	40920 Da

LEFTY1 + LEFTY2 Antibody - Additional Information

Purification	Affinity-chromatography
Immunogen	A synthesized peptide derived from human LEFTY1 + LEFTY2
Description	Function for LEFTY1: Required for left-right axis determination as a regulator of LEFTY2 and NODAL. Function for LEFTY2: Required for left-right (L-R) asymmetry determination of organ systems in mammals. May play a role in endometrial bleeding.
Storage Condition and Buffer	Rabbit IgG in phosphate buffered saline , pH 7.4, 150mM NaCl, 0.02% sodium azide and 50% glycerol. Store at +4°C short term. Store at -20°C long term. Avoid freeze / thaw cycle.

LEFTY1 + LEFTY2 Antibody - Protein Information

Name LEFTY2

Synonyms EBAF, LEFTA, LEFTYA, TGFB4

Function

Required for left-right (L-R) asymmetry determination of organ systems in mammals. May play a role in endometrial bleeding.

Cellular Location

Secreted.

Tissue Location

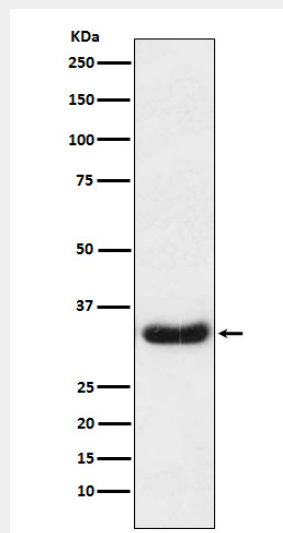
Mesenchymal cells of the endometrial stroma.

LEFTY1 + LEFTY2 Antibody - Protocols

Provided below are standard protocols that you may find useful for product applications.

- [Western Blot](#)
- [Blocking Peptides](#)
- [Dot Blot](#)
- [Immunohistochemistry](#)
- [Immunofluorescence](#)
- [Immunoprecipitation](#)
- [Flow Cytometry](#)
- [Cell Culture](#)

LEFTY1 + LEFTY2 Antibody - Images



Western blot analysis of LEFTY1 + LEFTY2 expression in Caco2 cell lysate.