

RCC1 Antibody
Rabbit mAb
Catalog # AP92411

Specification

RCC1 Antibody - Product Information

Application	WB, IHC, FC, ICC, IP
Primary Accession	P18754
Reactivity	Rat
Clonality	Monoclonal
Other Names	
RCC1; RCC1-I; SNHG3-RCC1; CHC1;	
Isotype	Rabbit IgG
Host	Rabbit
Calculated MW	44969 Da

RCC1 Antibody - Additional Information

Purification	Affinity-chromatography
Immunogen	A synthesized peptide derived from human RCC1
Description	Guanine-nucleotide releasing factor that promotes the exchange of Ran-bound GDP by GTP. Involved in the regulation of onset of chromosome condensation in the S phase. Binds both to the nucleosomes and double-stranded DNA.
Storage Condition and Buffer	Rabbit IgG in phosphate buffered saline , pH 7.4, 150mM NaCl, 0.02% sodium azide and 50% glycerol. Store at +4°C short term. Store at -20°C long term. Avoid freeze / thaw cycle.

RCC1 Antibody - Protein Information

Name RCC1

Synonyms CHC1

Function

Guanine-nucleotide releasing factor that promotes the exchange of Ran-bound GDP by GTP, and thereby plays an important role in RAN-mediated functions in nuclear import and mitosis (PubMed: [11336674](http://www.uniprot.org/citations/11336674), PubMed: [17435751](http://www.uniprot.org/citations/17435751), PubMed: [1944575](http://www.uniprot.org/citations/1944575), PubMed: [20668449](http://www.uniprot.org/citations/20668449), PubMed: [22215983](http://www.uniprot.org/citations/22215983), PubMed: [29042532](http://www.uniprot.org/citations/29042532)).

Contributes to the generation of high levels of chromosome-associated, GTP-bound RAN, which is important for mitotic spindle assembly and normal progress through mitosis (PubMed:12194828, PubMed:17435751, PubMed:22215983). Via its role in maintaining high levels of GTP-bound RAN in the nucleus, contributes to the release of cargo proteins from importins after nuclear import (PubMed:22215983). Involved in the regulation of onset of chromosome condensation in the S phase (PubMed:3678831). Binds both to the nucleosomes and double-stranded DNA (PubMed:17435751, PubMed:18762580).

Cellular Location

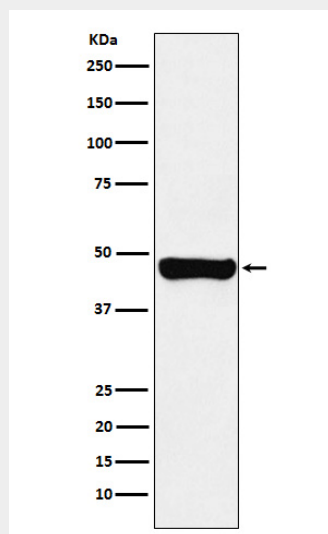
Nucleus. Chromosome. Cytoplasm Note=Predominantly nuclear in interphase cells (PubMed:12194828). Binds to mitotic chromosomes (PubMed:12194828, PubMed:17435751, PubMed:20668449).

RCC1 Antibody - Protocols

Provided below are standard protocols that you may find useful for product applications.

- [Western Blot](#)
- [Blocking Peptides](#)
- [Dot Blot](#)
- [Immunohistochemistry](#)
- [Immunofluorescence](#)
- [Immunoprecipitation](#)
- [Flow Cytometry](#)
- [Cell Culture](#)

RCC1 Antibody - Images



Western blot analysis of RCC1 expression in A431 cell lysate.