

**GGT1 Antibody**  
Rabbit mAb  
Catalog # AP92408

## Specification

---

### GGT1 Antibody - Product Information

Application	<b>WB, IHC</b>
Primary Accession	<a href="#">P19440</a>
Clonality	<b>Monoclonal</b>
<b>Other Names</b>	
GGT; GTG; CD224; GGT 1;	
Isotype	<b>Rabbit IgG</b>
Host	<b>Rabbit</b>
Calculated MW	<b>61410 Da</b>

### GGT1 Antibody - Additional Information

Purification	<b>Affinity-chromatography</b>
Immunogen	<b>A synthesized peptide derived from human GGT1</b>
Description	<b>Initiates extracellular glutathione (GSH) breakdown, provides cells with a local cysteine supply and contributes to maintain intracellular GSH level. It is part of the cell antioxidant defense mechanism. Catalyzes the transfer of the glutamyl moiety of glutathione to amino acids and dipeptide acceptors.</b>
Storage Condition and Buffer	<b>Rabbit IgG in phosphate buffered saline , pH 7.4, 150mM NaCl, 0.02% sodium azide and 50% glycerol. Store at +4°C short term. Store at -20°C long term. Avoid freeze / thaw cycle.</b>

### GGT1 Antibody - Protein Information

**Name** GGT1

**Synonyms** GGT

#### Function

Cleaves the gamma-glutamyl bond of extracellular glutathione (gamma-Glu-Cys-Gly), glutathione conjugates (such as maresin conjugate (13R)-S-glutathionyl-(14S)-hydroxy-(4Z,7Z,9E,11E,16Z,19Z)- docosahexaenoate, MCTR1) and other gamma-glutamyl compounds (such as leukotriene C4, LTC4) (PubMed:<a href="http://www.uniprot.org/citations/17924658" target="\_blank">17924658</a>, PubMed:<a href="http://www.uniprot.org/citations/21447318" target="\_blank">21447318</a>, PubMed:<a href="http://www.uniprot.org/citations/27791009" target="\_blank">27791009</a>). The

metabolism of glutathione by GGT1 releases free glutamate and the dipeptide cysteinyl-glycine, which is hydrolyzed to cysteine and glycine by dipeptidases (PubMed:<a href="http://www.uniprot.org/citations/27791009" target="\_blank">27791009</a>). In the presence of high concentrations of dipeptides and some amino acids, can also catalyze a transpeptidation reaction, transferring the gamma-glutamyl moiety to an acceptor amino acid to form a new gamma-glutamyl compound (PubMed:<a href="http://www.uniprot.org/citations/17924658" target="\_blank">17924658</a>, PubMed:<a href="http://www.uniprot.org/citations/21447318" target="\_blank">21447318</a>, PubMed:<a href="http://www.uniprot.org/citations/7673200" target="\_blank">7673200</a>, PubMed:<a href="http://www.uniprot.org/citations/7759490" target="\_blank">7759490</a>, PubMed:<a href="http://www.uniprot.org/citations/8095045" target="\_blank">8095045</a>, PubMed:<a href="http://www.uniprot.org/citations/8827453" target="\_blank">8827453</a>). Contributes to cysteine homeostasis, glutathione homeostasis and in the conversion of the leukotriene LTC4 to LTD4.

### Cellular Location

Cell membrane; Single-pass type II membrane protein {ECO:0000250|UniProtKB:P07314}

### Tissue Location

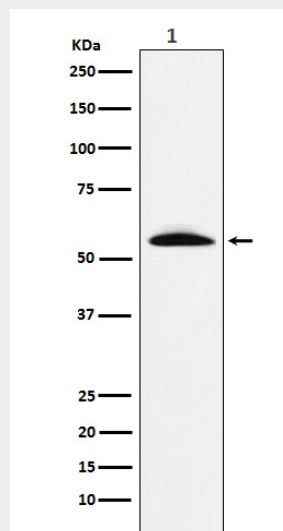
Detected in fetal and adult kidney and liver, adult pancreas, stomach, intestine, placenta and lung. There are several other tissue-specific forms that arise from alternative promoter usage but that produce the same protein

### GGT1 Antibody - Protocols

Provided below are standard protocols that you may find useful for product applications.

- [Western Blot](#)
- [Blocking Peptides](#)
- [Dot Blot](#)
- [Immunohistochemistry](#)
- [Immunofluorescence](#)
- [Immunoprecipitation](#)
- [Flow Cytometry](#)
- [Cell Culture](#)

### GGT1 Antibody - Images



Western blot analysis of GGT1 expression in Human fetal liver lysate.