

CSNK1A1 Antibody
Rabbit mAb
Catalog # AP92406

Specification

CSNK1A1 Antibody - Product Information

Application	WB
Primary Accession	P48729
Reactivity	Rat
Clonality	Monoclonal
Other Names	
CK1; CK1A; CKI alpha; CKIa; Csnk1a1; HLCDGP1;	
Isotype	Rabbit IgG
Host	Rabbit
Calculated MW	38915 Da

CSNK1A1 Antibody - Additional Information

Purification	Affinity-chromatography
Immunogen	A synthesized peptide derived from human CSNK1A1
Description	Casein kinases are operationally defined by their preferential utilization of acidic proteins such as caseins as substrates. It can phosphorylate a large number of proteins. Participates in Wnt signaling. Phosphorylates CTNNB1 at 'Ser-45'. May play a role in segregating chromosomes during mitosis.
Storage Condition and Buffer	Rabbit IgG in phosphate buffered saline , pH 7.4, 150mM NaCl, 0.02% sodium azide and 50% glycerol. Store at +4°C short term. Store at -20°C long term. Avoid freeze / thaw cycle.

CSNK1A1 Antibody - Protein Information

Name CSNK1A1

Function

Casein kinases are operationally defined by their preferential utilization of acidic proteins such as caseins as substrates (PubMed: [11955436](http://www.uniprot.org/citations/11955436), PubMed: [1409656](http://www.uniprot.org/citations/1409656), PubMed: [18305108](http://www.uniprot.org/citations/18305108), PubMed: [23902688](http://www.uniprot.org/citations/23902688)). It can phosphorylate a large number of proteins (PubMed: [11955436](http://www.uniprot.org/citations/11955436), PubMed: [1409656](http://www.uniprot.org/citations/1409656), PubMed: [18305108](http://www.uniprot.org/citations/18305108), PubMed: [23902688](http://www.uniprot.org/citations/23902688)).

href="http://www.uniprot.org/citations/18305108" target="_blank">18305108, PubMed:23902688). Participates in Wnt signaling (PubMed:11955436). Phosphorylates CTNNB1 at 'Ser-45' (PubMed:11955436). May phosphorylate PER1 and PER2 (By similarity). May play a role in segregating chromosomes during mitosis (PubMed:1409656). May play a role in keratin cytoskeleton disassembly and thereby, it may regulate epithelial cell migration (PubMed:23902688). Acts as a positive regulator of mTORC1 and mTORC2 signaling in response to nutrients by mediating phosphorylation of DEPTOR inhibitor (PubMed:22017875, PubMed:22017877). Acts as an inhibitor of NLRP3 inflammasome assembly by mediating phosphorylation of NLRP3 (By similarity).

Cellular Location

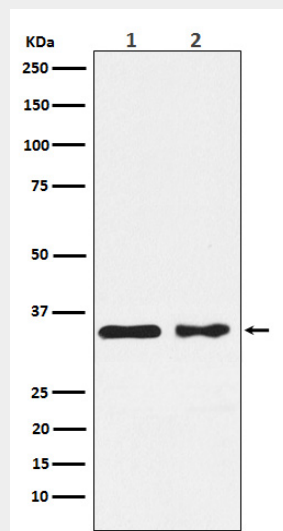
Cytoplasm. Cytoplasm, cytoskeleton, microtubule organizing center, centrosome. Chromosome, centromere, kinetochore. Nucleus speckle. Cytoplasm, cytoskeleton, cilium basal body {ECO:0000250|UniProtKB:Q8BK63}. Cytoplasm, cytoskeleton, spindle {ECO:0000250|UniProtKB:Q8BK63}. Note=Localizes to the centrosome in interphase cells, and to kinetochore fibers during mitosis. Also recruited to the keratin cytoskeleton (PubMed:23902688)

CSNK1A1 Antibody - Protocols

Provided below are standard protocols that you may find useful for product applications.

- [Western Blot](#)
- [Blocking Peptides](#)
- [Dot Blot](#)
- [Immunohistochemistry](#)
- [Immunofluorescence](#)
- [Immunoprecipitation](#)
- [Flow Cytometry](#)
- [Cell Culture](#)

CSNK1A1 Antibody - Images



Western blot analysis of CSNK1A1 expression in (1) MCF7 cell lysate; (2) NIH/3T3 cell lysate.