

ACHA4 Antibody
Rabbit mAb
Catalog # AP92399

Specification

ACHA4 Antibody - Product Information

Application	WB, IP
Primary Accession	P43681
Reactivity	Rat
Clonality	Monoclonal
Other Names	
Neuronal acetylcholine receptor subunit alpha-4; ACH4; AChR; Acra4; BFNC; CHRNA4; EBN; EBN1; NACHR; NACRA4;	
Isotype	Rabbit IgG
Host	Rabbit
Calculated MW	69957 Da

ACHA4 Antibody - Additional Information

Purification	Affinity-chromatography
Immunogen	A synthesized peptide derived from human ACHA4
Description	After binding acetylcholine, the AChR responds by an extensive change in conformation that affects all subunits and leads to opening of an ion-conducting channel across the plasma membrane.
Storage Condition and Buffer	Rabbit IgG in phosphate buffered saline , pH 7.4, 150mM NaCl, 0.02% sodium azide and 50% glycerol. Store at +4°C short term. Store at -20°C long term. Avoid freeze / thaw cycle.

ACHA4 Antibody - Protein Information

Name CHRNA4

Synonyms NACRA4

Function

After binding acetylcholine, the AChR responds by an extensive change in conformation that affects all subunits and leads to opening of an ion-conducting channel across the plasma membrane permeable to sodium ions.

Cellular Location

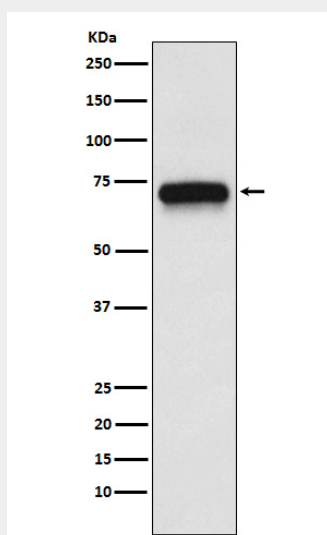
Postsynaptic cell membrane; Multi-pass membrane protein. Cell membrane; Multi-pass membrane protein. Cell membrane; Lipid-anchor

ACHA4 Antibody - Protocols

Provided below are standard protocols that you may find useful for product applications.

- [Western Blot](#)
- [Blocking Peptides](#)
- [Dot Blot](#)
- [Immunohistochemistry](#)
- [Immunofluorescence](#)
- [Immunoprecipitation](#)
- [Flow Cytometry](#)
- [Cell Culture](#)

ACHA4 Antibody - Images



Western blot analysis of ACHA4 expression in SH-SY5Y cell lysate.