

**Angiotensinogen Antibody**  
Rabbit mAb  
Catalog # AP92398

**Specification**

---

**Angiotensinogen Antibody - Product Information**

Application **WB, FC, ICC, IP**  
Primary Accession [P01019](#)  
Clonality **Monoclonal**

**Other Names**

AGT; Ang; Ang I; Ang II; Ang III; Angiotensinogen; ANHU; ANRT; AT-2; AT-II; PAT; Pre  
angiotensinogen; Serpin A8; SERPINA8;

Isotype **Rabbit IgG**  
Host **Rabbit**  
Calculated MW **53154 Da**

**Angiotensinogen Antibody - Additional Information**

Purification **Affinity-chromatography**  
Immunogen **A synthesized peptide derived from human Angiotensinogen**  
Description **Essential component of the renin-angiotensin system (RAS), a potent regulator of blood pressure, body fluid and electrolyte homeostasis. In response to lowered blood pressure, the enzyme renin cleaves angiotensinogen to produce angiotensin-1 (angiotensin 1-10).**  
Storage Condition and Buffer **Rabbit IgG in phosphate buffered saline , pH 7.4, 150mM NaCl, 0.02% sodium azide and 50% glycerol. Store at +4°C short term. Store at -20°C long term. Avoid freeze / thaw cycle.**

**Angiotensinogen Antibody - Protein Information**

Name AGT ([HGNC:333](#))

Synonyms SERPINA8

**Function**

Essential component of the renin-angiotensin system (RAS), a potent regulator of blood pressure, body fluid and electrolyte homeostasis.

**Cellular Location**

Secreted

**Tissue Location**

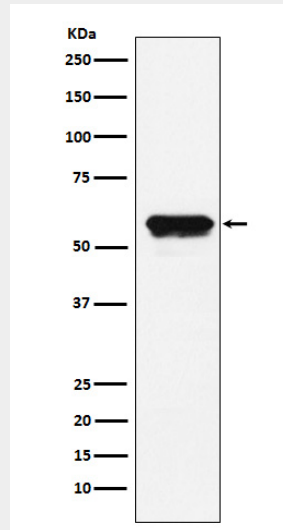
Expressed by the liver and secreted in plasma.

### Angiotensinogen Antibody - Protocols

Provided below are standard protocols that you may find useful for product applications.

- [Western Blot](#)
- [Blocking Peptides](#)
- [Dot Blot](#)
- [Immunohistochemistry](#)
- [Immunofluorescence](#)
- [Immunoprecipitation](#)
- [Flow Cytometry](#)
- [Cell Culture](#)

### Angiotensinogen Antibody - Images



Western blot analysis of Angiotensinogen expression in HepG2 cell lysate.