

CARD11 Antibody
Rabbit mAb
Catalog # AP92397

Specification

CARD11 Antibody - Product Information

Application	WB, ICC
Primary Accession	O9BXL7
Clonality	Monoclonal
Other Names	
CARD11; CARMA1; Carma 1; BIMP3;	
Isotype	Rabbit IgG
Host	Rabbit
Calculated MW	133284 Da

CARD11 Antibody - Additional Information

Purification	Affinity-chromatography
Immunogen	A synthesized peptide derived from human CARD11
Description	Involved in the costimulatory signal essential for T-cell receptor (TCR)-mediated T-cell activation. Its binding to DPP4 induces T-cell proliferation and NF-kappa-B activation in a T-cell receptor/CD3-dependent manner. Activates NF-kappa-B via BCL10 and IKK. Stimulates the phosphorylation of BCL10.
Storage Condition and Buffer	Rabbit IgG in phosphate buffered saline , pH 7.4, 150mM NaCl, 0.02% sodium azide and 50% glycerol. Store at +4°C short term. Store at -20°C long term. Avoid freeze / thaw cycle.

CARD11 Antibody - Protein Information

Name CARD11 {ECO:0000303|PubMed:11278692, ECO:0000312|HGNC:HGNC:16393}

Function

Adapter protein that plays a key role in adaptive immune response by transducing the activation of NF-kappa-B downstream of T- cell receptor (TCR) and B-cell receptor (BCR) engagement (PubMed:[11278692](http://www.uniprot.org/citations/11278692), PubMed:[11356195](http://www.uniprot.org/citations/11356195), PubMed:[12356734](http://www.uniprot.org/citations/12356734)). Transduces signals downstream TCR or BCR activation via the formation of a multiprotein complex together with BCL10 and MALT1 that induces NF-kappa-B and MAP kinase p38 (MAPK11, MAPK12, MAPK13 and/or MAPK14) pathways (PubMed:[11356195](http://www.uniprot.org/citations/11356195)). Upon activation in response to TCR or BCR triggering, CARD11

homooligomerizes to form a nucleating helical template that recruits BCL10 via CARD-CARD interaction, thereby promoting polymerization of BCL10 and subsequent recruitment of MALT1: this leads to I-kappa-B kinase (IKK) phosphorylation and degradation, and release of NF-kappa-B proteins for nuclear translocation (PubMed:24074955). Its binding to DPP4 induces T-cell proliferation and NF-kappa-B activation in a T-cell receptor/CD3-dependent manner (PubMed:17287217). Promotes linear ubiquitination of BCL10 by promoting the targeting of BCL10 to RNF31/HOIP (PubMed:27777308). Stimulates the phosphorylation of BCL10 (PubMed:11356195). Also activates the TORC1 signaling pathway (PubMed:28628108).

Cellular Location

Cytoplasm. Membrane raft. Note=Colocalized with DPP4 in membrane rafts.

Tissue Location

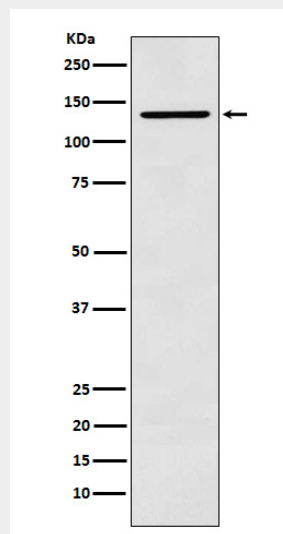
Detected in adult peripheral blood leukocytes, thymus, spleen and liver. Also found in promyelocytic leukemia HL-60 cells, chronic myelogenous leukemia K-562 cells, Burkitt's lymphoma Raji cells and colorectal adenocarcinoma SW480 cells. Not detected in HeLaS3, MOLT-4, A-549 and G431 cells.

CARD11 Antibody - Protocols

Provided below are standard protocols that you may find useful for product applications.

- [Western Blot](#)
- [Blocking Peptides](#)
- [Dot Blot](#)
- [Immunohistochemistry](#)
- [Immunofluorescence](#)
- [Immunoprecipitation](#)
- [Flow Cytometry](#)
- [Cell Culture](#)

CARD11 Antibody - Images



Western blot analysis of CARD11 expression in K562 cell lysate.