

**TF2B Antibody**  
**Rabbit mAb**  
**Catalog # AP92390**

## Specification

---

### TF2B Antibody - Product Information

Application	<b>WB, IP</b>
Primary Accession	<a href="#">Q00403</a>
Reactivity	<b>Rat</b>
Clonality	<b>Monoclonal</b>
<b>Other Names</b>	
gtf2b; S300 II; TF IIB; TF2B; TFIIB;	
Isotype	<b>Rabbit IgG</b>
Host	<b>Rabbit</b>
Calculated MW	<b>34833 Da</b>

### TF2B Antibody - Additional Information

Purification	<b>Affinity-chromatography</b>
Immunogen	<b>A synthesized peptide derived from human TF2B</b>
Description	<b>General factor that plays a major role in the activation of eukaryotic genes transcribed by RNA polymerase II.</b>
Storage Condition and Buffer	<b>Rabbit IgG in phosphate buffered saline , pH 7.4, 150mM NaCl, 0.02% sodium azide and 50% glycerol. Store at +4°C short term. Store at -20°C long term. Avoid freeze / thaw cycle.</b>

### TF2B Antibody - Protein Information

**Name** GTF2B

**Synonyms** TF2B, TFIIB

#### Function

General transcription factor that plays a role in transcription initiation by RNA polymerase II (Pol II). Involved in the pre-initiation complex (PIC) formation and Pol II recruitment at promoter DNA (PubMed: [12931194](http://www.uniprot.org/citations/12931194)), PubMed: [1517211](http://www.uniprot.org/citations/1517211), PubMed: [1876184](http://www.uniprot.org/citations/1876184), PubMed: [1946368](http://www.uniprot.org/citations/1946368), PubMed: [27193682](http://www.uniprot.org/citations/27193682), PubMed: [3029109](http://www.uniprot.org/citations/3029109), PubMed: [3818643](http://www.uniprot.org/citations/3818643), PubMed: [7601352](http://www.uniprot.org/citations/7601352), PubMed: [8413225](http://www.uniprot.org/citations/8413225)),

PubMed:<a href="http://www.uniprot.org/citations/8515820" target="\_blank">8515820</a>, PubMed:<a href="http://www.uniprot.org/citations/8516311" target="\_blank">8516311</a>, PubMed:<a href="http://www.uniprot.org/citations/8516312" target="\_blank">8516312</a>, PubMed:<a href="http://www.uniprot.org/citations/9420329" target="\_blank">9420329</a>). Together with the TATA box-bound TBP forms the core initiation complex and provides a bridge between TBP and the Pol II-TFIIF complex (PubMed:<a href="http://www.uniprot.org/citations/8413225" target="\_blank">8413225</a>, PubMed:<a href="http://www.uniprot.org/citations/8504927" target="\_blank">8504927</a>, PubMed:<a href="http://www.uniprot.org/citations/8515820" target="\_blank">8515820</a>, PubMed:<a href="http://www.uniprot.org/citations/8516311" target="\_blank">8516311</a>, PubMed:<a href="http://www.uniprot.org/citations/8516312" target="\_blank">8516312</a>). Released from the PIC early following the onset of transcription during the initiation and elongation transition and reassociates with TBP during the next transcription cycle (PubMed:<a href="http://www.uniprot.org/citations/7601352" target="\_blank">7601352</a>). Associates with chromatin to core promoter-specific regions (PubMed:<a href="http://www.uniprot.org/citations/12931194" target="\_blank">12931194</a>, PubMed:<a href="http://www.uniprot.org/citations/24441171" target="\_blank">24441171</a>). Binds to two distinct DNA core promoter consensus sequence elements in a TBP- independent manner; these IIB-recognition elements (BREs) are localized immediately upstream (BREu), 5'-[GC][GC][GA]CGCC-3', and downstream (BREd), 5'-[GA]T[TGA][TG][GT][TG][TG]-3', of the TATA box element (PubMed:<a href="http://www.uniprot.org/citations/10619841" target="\_blank">10619841</a>, PubMed:<a href="http://www.uniprot.org/citations/16230532" target="\_blank">16230532</a>, PubMed:<a href="http://www.uniprot.org/citations/7675079" target="\_blank">7675079</a>, PubMed:<a href="http://www.uniprot.org/citations/9420329" target="\_blank">9420329</a>). Modulates transcription start site selection (PubMed:<a href="http://www.uniprot.org/citations/10318856" target="\_blank">10318856</a>). Exhibits also autoacetyltransferase activity that contributes to the activated transcription (PubMed:<a href="http://www.uniprot.org/citations/12931194" target="\_blank">12931194</a>).

#### Cellular Location

Nucleus. Chromosome. Note=Non-acetylated form colocalizes with DNA in the G0/1, S and G2 phases of the cell cycle, but not during mitosis (PubMed:24441171). Acetylated form colocalizes at transcriptionally silent mitotic chromatids during mitosis at metaphase, anaphase, and telophase phases of the cell cycle (PubMed:24441171).

#### Tissue Location

Expressed in the inner cell mass forming the embryoblast (PubMed:24441171). Not detected in cells from the outer thin layer trophoblast (at protein level) (PubMed:24441171)

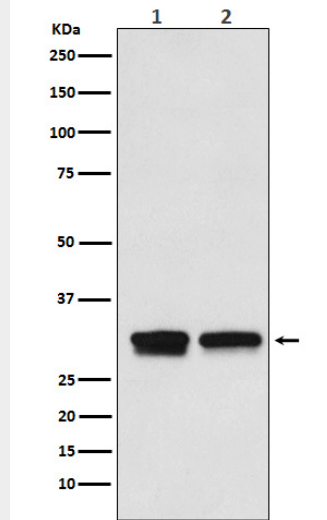
#### TF2B Antibody - Protocols

Provided below are standard protocols that you may find useful for product applications.

- [Western Blot](#)
- [Blocking Peptides](#)
- [Dot Blot](#)
- [Immunohistochemistry](#)
- [Immunofluorescence](#)
- [Immunoprecipitation](#)
- [Flow Cytometry](#)
- [Cell Culture](#)

#### TF2B Antibody - Images





Western blot analysis of TFIIIB expression in (1) HepG2 cell lysate; (2) RAW264.7 cell lysate.