

CRKL Antibody
Rabbit mAb
Catalog # AP92374

Specification

CRKL Antibody - Product Information

Application	WB, IHC, ICC
Primary Accession	P46109
Clonality	Monoclonal
Other Names	
Crk L; Crk like protein; Crkl; Crkol;	
Isotype	Rabbit IgG
Host	Rabbit
Calculated MW	33777 Da

CRKL Antibody - Additional Information

Purification	Affinity-chromatography
Immunogen	A synthesized peptide derived from human CRKL
Description	May mediate the transduction of intracellular signals.
Storage Condition and Buffer	Rabbit IgG in phosphate buffered saline , pH 7.4, 150mM NaCl, 0.02% sodium azide and 50% glycerol. Store at +4°C short term. Store at -20°C long term. Avoid freeze / thaw cycle.

CRKL Antibody - Protein Information

Name CRKL

Function
May mediate the transduction of intracellular signals.

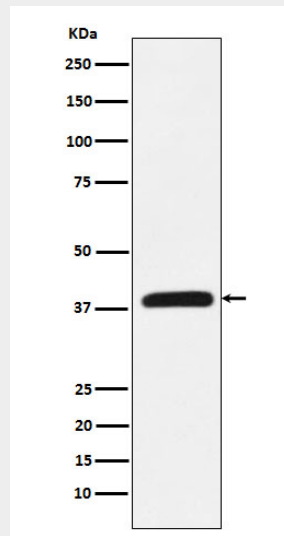
CRKL Antibody - Protocols

Provided below are standard protocols that you may find useful for product applications.

- [Western Blot](#)
- [Blocking Peptides](#)
- [Dot Blot](#)
- [Immunohistochemistry](#)
- [Immunofluorescence](#)
- [Immunoprecipitation](#)
- [Flow Cytometry](#)

- [Cell Culture](#)

CRKL Antibody - Images



Western blot analysis of CRKL expression in K562 cell lysate.