

**NCF1 Antibody**  
Rabbit mAb  
Catalog # AP92372

## Specification

---

### NCF1 Antibody - Product Information

Application	WB, IP
Primary Accession	<a href="#">P14598</a>
Clonality	Monoclonal
<b>Other Names</b>	
NCF1; NCF1A; NOXO2; SH3PXD1A; p47phox;	
Isotype	Rabbit IgG
Host	Rabbit
Calculated MW	44682 Da

### NCF1 Antibody - Additional Information

Purification	Affinity-chromatography
Immunogen	A synthesized peptide derived from human NCF1
Description	NCF2, NCF1, and a membrane bound cytochrome b558 are required for activation of the latent NADPH oxidase (necessary for superoxide production).
Storage Condition and Buffer	Rabbit IgG in phosphate buffered saline , pH 7.4, 150mM NaCl, 0.02% sodium azide and 50% glycerol. Store at +4°C short term. Store at -20°C long term. Avoid freeze / thaw cycle.

### NCF1 Antibody - Protein Information

**Name** NCF1

**Synonyms** NOXO2, SH3PXD1A

#### Function

NCF2, NCF1, and a membrane bound cytochrome b558 are required for activation of the latent NADPH oxidase (necessary for superoxide production).

#### Cellular Location

Cytoplasm, cytosol. Membrane; Peripheral membrane protein; Cytoplasmic side

#### Tissue Location

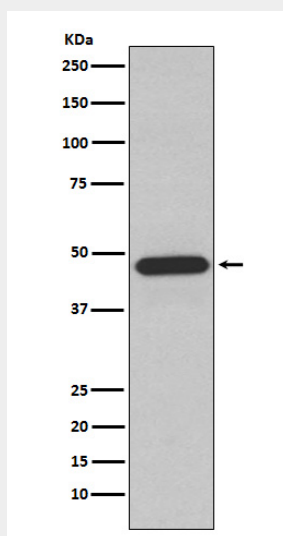
Detected in peripheral blood monocytes and neutrophils (at protein level).

## NCF1 Antibody - Protocols

Provided below are standard protocols that you may find useful for product applications.

- [Western Blot](#)
- [Blocking Peptides](#)
- [Dot Blot](#)
- [Immunohistochemistry](#)
- [Immunofluorescence](#)
- [Immunoprecipitation](#)
- [Flow Cytometry](#)
- [Cell Culture](#)

## NCF1 Antibody - Images



Western blot analysis of NCF1 expression in Raji cell lysate.