

ASS1 Antibody
Rabbit mAb
Catalog # AP92367

Specification

ASS1 Antibody - Product Information

Application	WB, IHC, FC, ICC, IP
Primary Accession	P00966
Reactivity	Rat
Clonality	Monoclonal
Other Names	
Argininosuccinate synthase 1; ASS; ass1; ASSA; Citrulline aspartate ligase; CTLN1;	
Isotype	Rabbit IgG
Host	Rabbit
Calculated MW	46530 Da

ASS1 Antibody - Additional Information

Purification	Affinity-chromatography
Immunogen	A synthesized peptide derived from human ASS1
Description	Amino-acid biosynthesis; L-arginine biosynthesis; L-arginine from L-ornithine and carbamoyl phosphate: step 2/3. Nitrogen metabolism; urea cycle; (N(omega)-L-arginino)succinate from L-aspartate and L-citrulline: step 1/1. Rabbit IgG in phosphate buffered saline , pH 7.4, 150mM NaCl, 0.02% sodium azide and 50% glycerol. Store at +4°C short term. Store at -20°C long term. Avoid freeze / thaw cycle.
Storage Condition and Buffer	

ASS1 Antibody - Protein Information

Name ASS1 ([HGNC:758](#))

Function

One of the enzymes of the urea cycle, the metabolic pathway transforming neurotoxic ammonia produced by protein catabolism into innocuous urea in the liver of ureotelic animals. Catalyzes the formation of arginosuccinate from aspartate, citrulline and ATP and together with ASL it is responsible for the biosynthesis of arginine in most body tissues.

Cellular Location

Cytoplasm, cytosol

Tissue Location

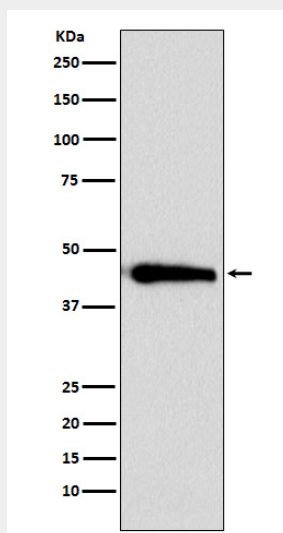
Expressed in adult liver.

ASS1 Antibody - Protocols

Provided below are standard protocols that you may find useful for product applications.

- [Western Blot](#)
- [Blocking Peptides](#)
- [Dot Blot](#)
- [Immunohistochemistry](#)
- [Immunofluorescence](#)
- [Immunoprecipitation](#)
- [Flow Cytometry](#)
- [Cell Culture](#)

ASS1 Antibody - Images



Western blot analysis of ASS1 expression in HeLa cell lysate.