

**LIMPII Antibody**  
Rabbit mAb  
Catalog # AP92365

## Specification

---

### LIMPII Antibody - Product Information

Application	WB, IHC, FC, IP
Primary Accession	<a href="#">Q14108</a>
Reactivity	Rat
Clonality	Monoclonal
<b>Other Names</b>	
AMRF; CD36; CD36L2; EPM4; HLGP85; LGP85; LIMP2; LIMPII; Scarb2; SRBII;	
Isotype	Rabbit IgG
Host	Rabbit
Calculated MW	54290 Da

### LIMPII Antibody - Additional Information

Purification	Affinity-chromatography
Immunogen	A synthesized peptide derived from human LIMPII
Description	Acts as a lysosomal receptor for glucosylceramidase (GBA) targeting.
Storage Condition and Buffer	Rabbit IgG in phosphate buffered saline , pH 7.4, 150mM NaCl, 0.02% sodium azide and 50% glycerol. Store at +4°C short term. Store at -20°C long term. Avoid freeze / thaw cycle.

### LIMPII Antibody - Protein Information

**Name** SCARB2

**Synonyms** CD36L2, LIMP2, LIMPII

**Function**

Acts as a lysosomal receptor for glucosylceramidase (GBA1) targeting.

**Cellular Location**

Lysosome membrane; Multi-pass membrane protein

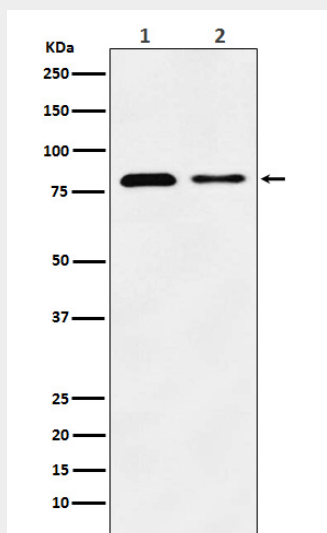
### LIMPII Antibody - Protocols

Provided below are standard protocols that you may find useful for product applications.

- [Western Blot](#)

- [Blocking Peptides](#)
- [Dot Blot](#)
- [Immunohistochemistry](#)
- [Immunofluorescence](#)
- [Immunoprecipitation](#)
- [Flow Cytometry](#)
- [Cell Culture](#)

### LIMPII Antibody - Images



Western blot analysis of LIMPII expression in (1) HeLa cell lysate; (2) Mouse liver lysate.