

**Triosephosphate isomerase Antibody**  
Rabbit mAb  
Catalog # AP92364**Specification**

---

**Triosephosphate isomerase Antibody - Product Information**

|                            |                        |
|----------------------------|------------------------|
| Application                | WB, FC                 |
| Primary Accession          | <a href="#">P60174</a> |
| Reactivity                 | Rat                    |
| Clonality                  | Monoclonal             |
| <b>Other Names</b>         |                        |
| HEL-S-49; TIM; TPI1; TPID; |                        |
| Isotype                    | Rabbit IgG             |
| Host                       | Rabbit                 |
| Calculated MW              | 26669 Da               |

**Triosephosphate isomerase Antibody - Additional Information**

|                              |  |
|------------------------------|--|
| Purification                 | <b>Affinity-chromatography</b>   |
| Immunogen                    | <b>A synthesized peptide derived from human Triosephosphate isomerase</b>  |
| Description                  | <b>Triosephosphate isomerase (TIM) catalyses the reversible interconversion of G3P and DHAP. Only G3P can be used in glycolysis, therefore TIM is essential for energy production, allowing two molecules of G3P to be produced for every glucose molecule, thereby doubling the energy yield.</b> |
| Storage Condition and Buffer | <b>Rabbit IgG in phosphate buffered saline , pH 7.4, 150mM NaCl, 0.02% sodium azide and 50% glycerol. Store at +4°C short term. Store at -20°C long term. Avoid freeze / thaw cycle.</b>   |

**Triosephosphate isomerase Antibody - Protein Information****Name** TPI1**Synonyms** TPI**Function**

Triosephosphate isomerase is an extremely efficient metabolic enzyme that catalyzes the interconversion between dihydroxyacetone phosphate (DHAP) and D-glyceraldehyde-3-phosphate (G3P) in glycolysis and gluconeogenesis.

**Cellular Location**

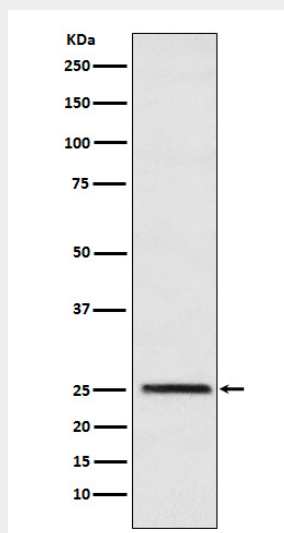
Cytoplasm {ECO:0000255|PROSITE-ProRule:PRU10127}.

## Triosephosphate isomerase Antibody - Protocols

Provided below are standard protocols that you may find useful for product applications.

- [Western Blot](#)
- [Blocking Peptides](#)
- [Dot Blot](#)
- [Immunohistochemistry](#)
- [Immunofluorescence](#)
- [Immunoprecipitation](#)
- [Flow Cytometry](#)
- [Cell Culture](#)

## Triosephosphate isomerase Antibody - Images



Western blot analysis of Triosephosphate isomerase expression in HeLa cell lysate.