

**BCAR1 Antibody**  
Rabbit mAb  
Catalog # AP92360

## Specification

---

### BCAR1 Antibody - Product Information

Application	WB
Primary Accession	<a href="#">P56945</a>
Reactivity	Rat
Clonality	Monoclonal
<b>Other Names</b>	
BCAR 1; CAS; CAS1; Cass1; CRKAS; p130cas;	
Isotype	Rabbit IgG
Host	Rabbit
Calculated MW	93372 Da

### BCAR1 Antibody - Additional Information

Purification	<b>Affinity-chromatography</b>
Immunogen	<b>A synthesized peptide derived from human BCAR1</b>
Description	<b>Docking protein which plays a central coordinating role for tyrosine kinase-based signaling related to cell adhesion. Implicated in induction of cell migration. Overexpression confers antiestrogen resistance on breast cancer cells.</b>
Storage Condition and Buffer	<b>Rabbit IgG in phosphate buffered saline , pH 7.4, 150mM NaCl, 0.02% sodium azide and 50% glycerol. Store at +4°C short term. Store at -20°C long term. Avoid freeze / thaw cycle.</b>

### BCAR1 Antibody - Protein Information

**Name** BCAR1

**Synonyms** CAS, CASS1, CRKAS

#### Function

Docking protein which plays a central coordinating role for tyrosine kinase-based signaling related to cell adhesion (PubMed: [12432078](http://www.uniprot.org/citations/12432078), PubMed: [12832404](http://www.uniprot.org/citations/12832404)). Implicated in induction of cell migration and cell branching (PubMed: [12432078](http://www.uniprot.org/citations/12432078), PubMed: [12832404](http://www.uniprot.org/citations/12832404), PubMed: [17038317](http://www.uniprot.org/citations/17038317)). Involved in the BCAR3-mediated inhibition of TGFB signaling (By similarity).

### Cellular Location

Cell junction, focal adhesion. Cytoplasm Cell projection, axon {ECO:0000250|UniProtKB:Q61140}  
Note=Unphosphorylated form localizes in the cytoplasm (By similarity) Localizes to focal adhesion sites following integrin engagement (By similarity). {ECO:0000250|UniProtKB:Q61140}

### Tissue Location

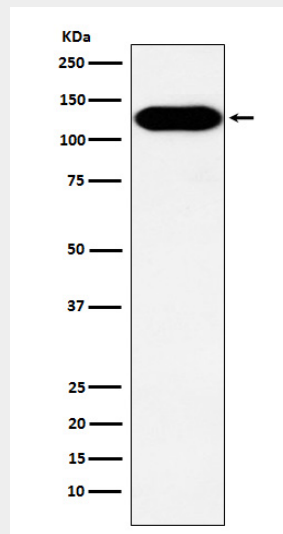
Expressed in B-cells (at protein level) (PubMed:9020138). Widely expressed with an abundant expression in the testis (PubMed:10639512). Low level of expression seen in the liver, thymus, and peripheral blood leukocytes (PubMed:10639512)

### BCAR1 Antibody - Protocols

Provided below are standard protocols that you may find useful for product applications.

- [Western Blot](#)
- [Blocking Peptides](#)
- [Dot Blot](#)
- [Immunohistochemistry](#)
- [Immunofluorescence](#)
- [Immunoprecipitation](#)
- [Flow Cytometry](#)
- [Cell Culture](#)

### BCAR1 Antibody - Images



Western blot analysis of BCAR1 expression in A431 cell lysate.