

**CCL4/MIP1 beta Antibody**  
Rabbit mAb  
Catalog # AP92359

## Specification

---

### CCL4/MIP1 beta Antibody - Product Information

Application	WB, ICC, IP
Primary Accession	<a href="#">P13236</a>
Clonality	Monoclonal
<b>Other Names</b>	
ACT2; G-26; HC21; LAG1; LAG-1; MIP1B; SCYA2; SCYA4; MIP1B1; AT744.1;MIP-1-beta;	
Isotype	Rabbit IgG
Host	Rabbit
Calculated MW	10212 Da

### CCL4/MIP1 beta Antibody - Additional Information

Purification	<b>Affinity-chromatography</b>
Immunogen	<b>A synthesized peptide derived from human CCL4/MIP1 beta</b>
Description	<b>Monokine with inflammatory and chemokinetic properties. Binds to CCR5. One of the major HIV-suppressive factors produced by CD8+ T-cells. Recombinant MIP-1-beta induces a dose-dependent inhibition of different strains of HIV-1, HIV-2, and simian immunodeficiency virus (SIV).</b>
Storage Condition and Buffer	<b>Rabbit IgG in phosphate buffered saline , pH 7.4, 150mM NaCl, 0.02% sodium azide and 50% glycerol. Store at +4°C short term. Store at -20°C long term. Avoid freeze / thaw cycle.</b>

### CCL4/MIP1 beta Antibody - Protein Information

**Name** CCL4

**Synonyms** LAG1, MIP1B, SCYA4

#### Function

Monokine with inflammatory and chemokinetic properties. Binds to CCR5. One of the major HIV-suppressive factors produced by CD8+ T- cells. Recombinant MIP-1-beta induces a dose-dependent inhibition of different strains of HIV-1, HIV-2, and simian immunodeficiency virus (SIV). The processed form MIP-1-beta(3-69) retains the abilities to induce down-modulation of surface expression of the chemokine receptor CCR5 and to inhibit the CCR5-mediated entry of HIV-1 in T-cells. MIP-1- beta(3-69) is also a ligand for CCR1 and CCR2 isoform B.

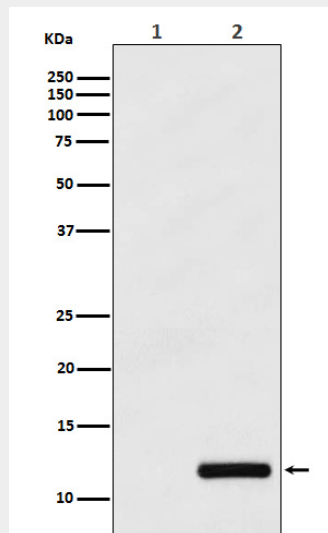
**Cellular Location**  
Secreted.

### CCL4/MIP1 beta Antibody - Protocols

Provided below are standard protocols that you may find useful for product applications.

- [Western Blot](#)
- [Blocking Peptides](#)
- [Dot Blot](#)
- [Immunohistochemistry](#)
- [Immunofluorescence](#)
- [Immunoprecipitation](#)
- [Flow Cytometry](#)
- [Cell Culture](#)

### CCL4/MIP1 beta Antibody - Images



Western blot analysis of CCL4/MIP1 beta expression in (1) THP-1 cell lysate; (2) THP-1 cell treated with PMA+LPS+Brefeldin A.