

**Salivary alpha amylase Antibody**  
Rabbit mAb  
Catalog # AP92358

**Specification**

---

**Salivary alpha amylase Antibody - Product Information**

Application	WB
Primary Accession	<a href="#">P04745</a>
Clonality	Monoclonal
<b>Other Names</b>	
Alpha amylase; AMY1; AMY1C; AMY2; AMY2B; AMY3; HXA;	
Isotype	Rabbit IgG
Host	Rabbit
Calculated MW	58kDa KDa

**Salivary alpha amylase Antibody - Additional Information**

Purification	Affinity-chromatography
Immunogen	A synthesized peptide derived from human Salivary alpha amylase
Description	Belongs to the glycosyl hydrolase 13 family.
Storage Condition and Buffer	Rabbit IgG in phosphate buffered saline , pH 7.4, 150mM NaCl, 0.02% sodium azide and 50% glycerol. Store at +4°C short term. Store at -20°C long term. Avoid freeze / thaw cycle.

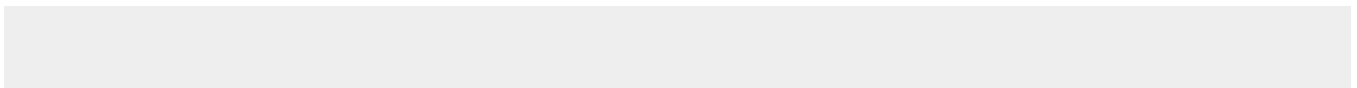
**Salivary alpha amylase Antibody - Protein Information**

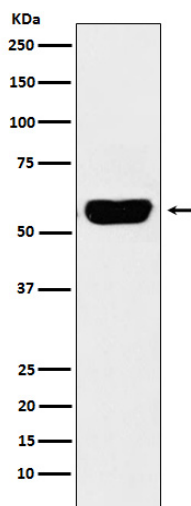
**Salivary alpha amylase Antibody - Protocols**

Provided below are standard protocols that you may find useful for product applications.

- [Western Blot](#)
- [Blocking Peptides](#)
- [Dot Blot](#)
- [Immunohistochemistry](#)
- [Immunofluorescence](#)
- [Immunoprecipitation](#)
- [Flow Cytometry](#)
- [Cell Culture](#)

**Salivary alpha amylase Antibody - Images**





Western blot analysis of Salivary alpha amylase expression in Human pancreas lysate.