

**TRIM29 Antibody**  
Rabbit mAb  
Catalog # AP92355

## Specification

---

### TRIM29 Antibody - Product Information

Application	WB
Primary Accession	<a href="#">O14134</a>
Reactivity	Rat
Clonality	Monoclonal
<b>Other Names</b>	
ATDC; TRIM29;	
Isotype	Rabbit IgG
Host	Rabbit
Calculated MW	65835 Da

### TRIM29 Antibody - Additional Information

Purification	Affinity-chromatography
Immunogen	A synthesized peptide derived from human TRIM29
Description	It is able to complement the radiosensitivity defect of an ataxia telangiectasia (AT) fibroblast cell line.
Storage Condition and Buffer	Rabbit IgG in phosphate buffered saline , pH 7.4, 150mM NaCl, 0.02% sodium azide and 50% glycerol. Store at +4°C short term. Store at -20°C long term. Avoid freeze / thaw cycle.

### TRIM29 Antibody - Protein Information

**Name** TRIM29

**Synonyms** ATDC

#### Function

Plays a crucial role in the regulation of macrophage activation in response to viral or bacterial infections within the respiratory tract. Mechanistically, TRIM29 interacts with IKBKG/NEMO in the lysosome where it induces its 'Lys-48' ubiquitination and subsequent degradation. In turn, the expression of type I interferons and the production of pro-inflammatory cytokines are inhibited. Additionally, induces the 'Lys-48' ubiquitination of STING1 in a similar way, leading to its degradation.

#### Cellular Location

Cytoplasm. Lysosome. Note=Colocalizes with intermediate filaments

#### Tissue Location

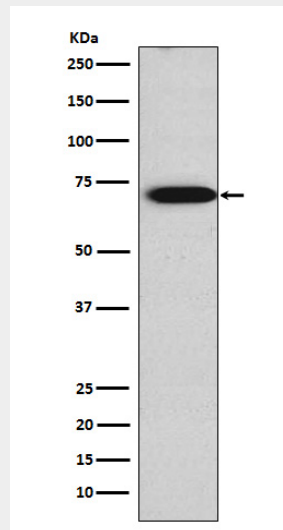
Expressed in placenta, prostate and thymus.

### TRIM29 Antibody - Protocols

Provided below are standard protocols that you may find useful for product applications.

- [Western Blot](#)
- [Blocking Peptides](#)
- [Dot Blot](#)
- [Immunohistochemistry](#)
- [Immunofluorescence](#)
- [Immunoprecipitation](#)
- [Flow Cytometry](#)
- [Cell Culture](#)

### TRIM29 Antibody - Images



Western blot analysis of TRIM29 expression in JAR cell lysate.