

**USP28 Antibody**  
Rabbit mAb  
Catalog # AP92353

## Specification

---

### USP28 Antibody - Product Information

Application	WB
Primary Accession	<a href="#">O96RU2</a>
Reactivity	Rat
Clonality	Monoclonal
<b>Other Names</b>	
USP28 ;	
Isotype	Rabbit IgG
Host	Rabbit
Calculated MW	122491 Da

### USP28 Antibody - Additional Information

Purification	Affinity-chromatography
Immunogen	A synthesized peptide derived from human USP28
Description	Deubiquitinase involved in DNA damage response checkpoint and MYC proto-oncogene stability. Involved in DNA damage induced apoptosis by specifically deubiquitinating proteins of the DNA damage pathway such as CLSPN.
Storage Condition and Buffer	Rabbit IgG in phosphate buffered saline , pH 7.4, 150mM NaCl, 0.02% sodium azide and 50% glycerol. Store at +4°C short term. Store at -20°C long term. Avoid freeze / thaw cycle.

### USP28 Antibody - Protein Information

**Name** USP28

**Synonyms** KIAA1515

#### Function

Deubiquitinase involved in DNA damage response checkpoint and MYC proto-oncogene stability. Involved in DNA damage induced apoptosis by specifically deubiquitinating proteins of the DNA damage pathway such as CLSPN. Also involved in G2 DNA damage checkpoint, by deubiquitinating CLSPN, and preventing its degradation by the anaphase promoting complex/cyclosome (APC/C). In contrast, it does not deubiquitinate PLK1. Specifically deubiquitinates MYC in the nucleoplasm, leading to prevent MYC degradation by the proteasome: acts by specifically interacting with isoform 1 of FBXW7 (FBW7alpha) in the nucleoplasm and counteracting ubiquitination of MYC by the SCF(FBW7) complex. In contrast, it does not interact with isoform 4 of FBXW7 (FBW7gamma)

in the nucleolus, allowing MYC degradation and explaining the selective MYC degradation in the nucleolus. Deubiquitinates ZNF304, hence preventing ZNF304 degradation by the proteasome and leading to the activated KRAS-mediated promoter hypermethylation and transcriptional silencing of tumor suppressor genes (TSGs) in a subset of colorectal cancers (CRC) cells (PubMed:<a href="http://www.uniprot.org/citations/24623306" target="\_blank">24623306</a>).

#### Cellular Location

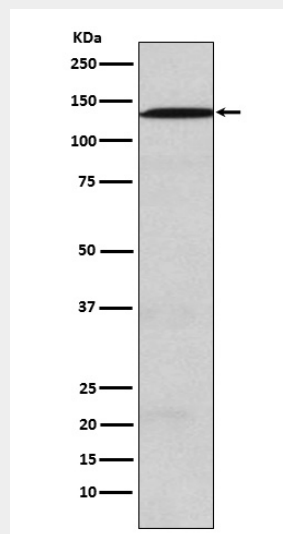
Nucleus, nucleoplasm

#### USP28 Antibody - Protocols

Provided below are standard protocols that you may find useful for product applications.

- [Western Blot](#)
- [Blocking Peptides](#)
- [Dot Blot](#)
- [Immunohistochemistry](#)
- [Immunofluorescence](#)
- [Immunoprecipitation](#)
- [Flow Cytometry](#)
- [Cell Culture](#)

#### USP28 Antibody - Images



Western blot analysis of USP28 expression in SW480 cell lysate.