

**Fibrinogen alpha chain Antibody**  
**Rabbit mAb**  
**Catalog # AP92351****Specification**

---

**Fibrinogen alpha chain Antibody - Product Information**

Application	WB, IHC, FC, ICC, IP
Primary Accession	<a href="#">P02671</a>
Reactivity	Rat
Clonality	Monoclonal
<b>Other Names</b>	
Fba5e; FGA; Fib; Fib2; Fibrinopeptide A;	
Isotype	Rabbit IgG
Host	Rabbit
Calculated MW	94973 Da

**Fibrinogen alpha chain Antibody - Additional Information**

Purification	<b>Affinity-chromatography</b>
Immunogen	<b>A synthesized peptide derived from human Fibrinogen alpha chain</b>
Description	<b>Fibrinogen has a double function: yielding monomers that polymerize into fibrin and acting as a cofactor in platelet aggregation.</b>
Storage Condition and Buffer	<b>Rabbit IgG in phosphate buffered saline , pH 7.4, 150mM NaCl, 0.02% sodium azide and 50% glycerol. Store at +4°C short term. Store at -20°C long term. Avoid freeze / thaw cycle.</b>

**Fibrinogen alpha chain Antibody - Protein Information****Name** FGA**Function**

Cleaved by the protease thrombin to yield monomers which, together with fibrinogen beta (FGB) and fibrinogen gamma (FGG), polymerize to form an insoluble fibrin matrix. Fibrin has a major function in hemostasis as one of the primary components of blood clots. In addition, functions during the early stages of wound repair to stabilize the lesion and guide cell migration during re-epithelialization. Was originally thought to be essential for platelet aggregation, based on in vitro studies using anticoagulated blood. However, subsequent studies have shown that it is not absolutely required for thrombus formation in vivo. Enhances expression of SELP in activated platelets via an ITGB3-dependent pathway. Maternal fibrinogen is essential for successful pregnancy. Fibrin deposition is also associated with infection, where it protects against IFNG-mediated hemorrhage. May also facilitate the immune response via both innate and T-cell mediated pathways.

### Cellular Location

Secreted

### Tissue Location

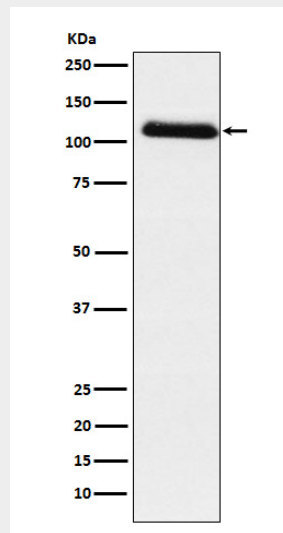
Detected in blood plasma (at protein level).

### Fibrinogen alpha chain Antibody - Protocols

Provided below are standard protocols that you may find useful for product applications.

- [Western Blot](#)
- [Blocking Peptides](#)
- [Dot Blot](#)
- [Immunohistochemistry](#)
- [Immunofluorescence](#)
- [Immunoprecipitation](#)
- [Flow Cytometry](#)
- [Cell Culture](#)

### Fibrinogen alpha chain Antibody - Images



Western blot analysis of Fibrinogen alpha chain expression in Human plasma lysate.