

**Angiotensinogen Antibody**  
Rabbit mAb  
Catalog # AP92350**Specification**

---

**Angiotensinogen Antibody - Product Information**

Application	WB, FC, IP
Primary Accession	<a href="#">P01019</a>
Clonality	Monoclonal
<b>Other Names</b>	
AGT; Angiotensin I; ANHU; Angiotensinogen; Angiotensin II; SERPINA8; Serpin A8;	
Isotype	Rabbit IgG
Host	Rabbit
Calculated MW	53154 Da

**Angiotensinogen Antibody - Additional Information**

Purification	Affinity-chromatography
Immunogen	A synthesized peptide derived from human Angiotensinogen
Description	Essential component of the renin-angiotensin system (RAS), a potent regulator of blood pressure, body fluid and electrolyte homeostasis. In response to lowered blood pressure, the enzyme renin cleaves angiotensinogen to produce angiotensin-1 (angiotensin 1-10).
Storage Condition and Buffer	Rabbit IgG in phosphate buffered saline , pH 7.4, 150mM NaCl, 0.02% sodium azide and 50% glycerol. Store at +4°C short term. Store at -20°C long term. Avoid freeze / thaw cycle.

**Angiotensinogen Antibody - Protein Information**Name AGT ([HGNC:333](#))

Synonyms SERPINA8

**Function**

Essential component of the renin-angiotensin system (RAS), a potent regulator of blood pressure, body fluid and electrolyte homeostasis.

**Cellular Location**

Secreted

**Tissue Location**

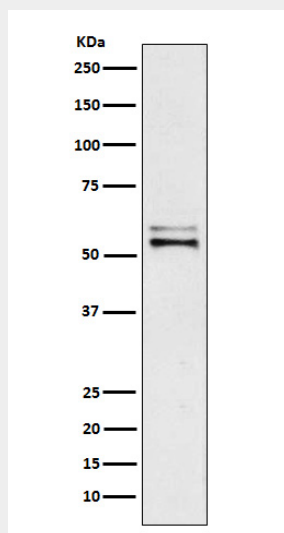
Expressed by the liver and secreted in plasma.

## Angiotensinogen Antibody - Protocols

Provided below are standard protocols that you may find useful for product applications.

- [Western Blot](#)
- [Blocking Peptides](#)
- [Dot Blot](#)
- [Immunohistochemistry](#)
- [Immunofluorescence](#)
- [Immunoprecipitation](#)
- [Flow Cytometry](#)
- [Cell Culture](#)

## Angiotensinogen Antibody - Images



Western blot analysis of Angiotensinogen expression in Human plasma lysate.