

EXTL2 Antibody (C-term)
Affinity Purified Rabbit Polyclonal Antibody (Pab)
Catalog # AP9234b

Specification

EXTL2 Antibody (C-term) - Product Information

Application	WB,E
Primary Accession	O9UBQ6
Reactivity	Human, Mouse
Host	Rabbit
Clonality	Polyclonal
Isotype	Rabbit IgG
Calculated MW	37466
Antigen Region	269-295

EXTL2 Antibody (C-term) - Additional Information

Gene ID 2135

Other Names

Exostosin-like 2, Alpha-1, 4-N-acetylhexosaminyltransferase EXTL2, Alpha-GalNAcT EXTL2, EXT-related protein 2, Glucuronyl-galactosyl-proteoglycan 4-alpha-N-acetylglucosaminyltransferase, Processed exostosin-like 2, EXTL2, EXTR2

Target/Specificity

This EXTL2 antibody is generated from rabbits immunized with a KLH conjugated synthetic peptide between 269-295 amino acids from the C-terminal region of human EXTL2.

Dilution

WB~~1:1000

Format

Purified polyclonal antibody supplied in PBS with 0.09% (W/V) sodium azide. This antibody is purified through a protein A column, followed by peptide affinity purification.

Storage

Maintain refrigerated at 2-8°C for up to 2 weeks. For long term storage store at -20°C in small aliquots to prevent freeze-thaw cycles.

Precautions

EXTL2 Antibody (C-term) is for research use only and not for use in diagnostic or therapeutic procedures.

EXTL2 Antibody (C-term) - Protein Information

Name EXTL2

Synonyms EXTR2

Function Glycosyltransferase required for the biosynthesis of heparan- sulfate and responsible for the alternating addition of beta-1-4-linked glucuronic acid (GlcA) and alpha-1-4-linked N-acetylglucosamine (GlcNAc) units to nascent heparan sulfate chains.

Cellular Location

Endoplasmic reticulum membrane; Single-pass type II membrane protein

Tissue Location

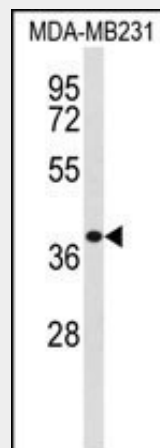
Ubiquitous.

EXTL2 Antibody (C-term) - Protocols

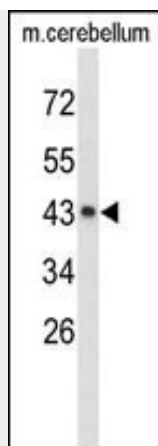
Provided below are standard protocols that you may find useful for product applications.

- [Western Blot](#)
- [Blocking Peptides](#)
- [Dot Blot](#)
- [Immunohistochemistry](#)
- [Immunofluorescence](#)
- [Immunoprecipitation](#)
- [Flow Cytometry](#)
- [Cell Culture](#)

EXTL2 Antibody (C-term) - Images



Western blot analysis of EXTL2 Antibody (C-term) (Cat. #AP9234b) in MDA-MB231 cell line lysates (35ug/lane). EXTL2 (arrow) was detected using the purified Pab;



Western blot analysis of EXTL2 Antibody (C-term) (Cat. #AP9234b) in mouse cerebellum tissue lysates (35ug/lane). EXTL2 (arrow) was detected using the purified Pab.

EXTL2 Antibody (C-term) - Background

EXTL2 is a glycosyltransferase required for the biosynthesis of heparan-sulfate and responsible for the alternating addition of beta-1-4-linked glucuronic acid (GlcA) and alpha-1-4-linked N-acetylglucosamine (GlcNAc) units to nascent heparan sulfate chains.

EXTL2 Antibody (C-term) - References

Kaidonis,X., et.al, Eur. J. Hum. Genet. 18 (2), 194-199 (2010)
Sobhany,M., et.al, J. Biol. Chem. 280 (25), 23441-23445 (2005)