

**LDHB Antibody**  
Rabbit mAb  
Catalog # AP92347

## Specification

---

### LDHB Antibody - Product Information

|   |                        |
|---|------------------------|
| Application   | WB, IHC, FC, ICC, IP   |
| Primary Accession   | <a href="#">P07195</a> |
| Clonality   | Monoclonal             |
| <b>Other Names</b>  |                        |
| HEL S 281; LDH B; LDH H; LDH-B; LDH-H; LDHB; LDHBD; LDHH; TRG5; |                        |
| Isotype   | Rabbit IgG             |
| Host  | Rabbit                 |
| Calculated MW   | 36638 Da               |

### LDHB Antibody - Additional Information

|                              |   |
|------------------------------|---|
| Purification                 | Affinity-chromatography   |
| Immunogen                    | A synthesized peptide derived from human LDHB   |
| Description                  | Fermentation; pyruvate fermentation to lactate; (S)-lactate from pyruvate: step 1/1.  |
| Storage Condition and Buffer | Rabbit IgG in phosphate buffered saline , pH 7.4, 150mM NaCl, 0.02% sodium azide and 50% glycerol. Store at +4°C short term. Store at -20°C long term. Avoid freeze / thaw cycle. |

### LDHB Antibody - Protein Information

**Name** LDHB

#### Function

Interconverts simultaneously and stereospecifically pyruvate and lactate with concomitant interconversion of NADH and NAD(+).

#### Cellular Location

Cytoplasm. Mitochondrion inner membrane; Peripheral membrane protein

#### Tissue Location

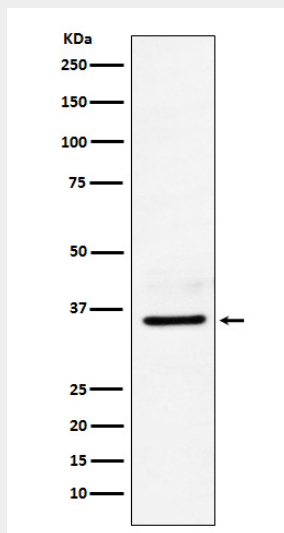
Predominantly expressed in aerobic tissues such as cardiac muscle.

### LDHB Antibody - Protocols

Provided below are standard protocols that you may find useful for product applications.

- [Western Blot](#)
- [Blocking Peptides](#)
- [Dot Blot](#)
- [Immunohistochemistry](#)
- [Immunofluorescence](#)
- [Immunoprecipitation](#)
- [Flow Cytometry](#)
- [Cell Culture](#)

### LDHB Antibody - Images



Western blot analysis of LDHB expression in HeLa cell lysate.