

NDUFS1 Antibody
Rabbit mAb
Catalog # AP92345

Specification

NDUFS1 Antibody - Product Information

Application	WB, IHC, FC, ICC, IP
Primary Accession	P28331
Reactivity	Rat
Clonality	Monoclonal
Other Names	
CI-75kD; NDUFS1; PRO1304;	
Isotype	Rabbit IgG
Host	Rabbit
Calculated MW	79468 Da

NDUFS1 Antibody - Additional Information

Purification	Affinity-chromatography
Immunogen	A synthesized peptide derived from human NDUFS1
Description	Core subunit of the mitochondrial membrane respiratory chain NADH dehydrogenase (Complex I) that is believed to belong to the minimal assembly required for catalysis. Complex I functions in the transfer of electrons from NADH to the respiratory chain.
Storage Condition and Buffer	Rabbit IgG in phosphate buffered saline , pH 7.4, 150mM NaCl, 0.02% sodium azide and 50% glycerol. Store at +4°C short term. Store at -20°C long term. Avoid freeze / thaw cycle.

NDUFS1 Antibody - Protein Information

Name NDUFS1

Function

Core subunit of the mitochondrial membrane respiratory chain NADH dehydrogenase (Complex I) which catalyzes electron transfer from NADH through the respiratory chain, using ubiquinone as an electron acceptor (PubMed: [30879903](http://www.uniprot.org/citations/30879903), PubMed: [31557978](http://www.uniprot.org/citations/31557978)). Essential for catalysing the entry and efficient transfer of electrons within complex I (PubMed: [31557978](http://www.uniprot.org/citations/31557978)). Plays a key role in the assembly and stability of complex I and participates in the association of complex I with ubiquinol-cytochrome reductase complex (Complex III) to form supercomplexes (PubMed:

href="http://www.uniprot.org/citations/30879903" target="_blank">30879903, PubMed:31557978).

Cellular Location

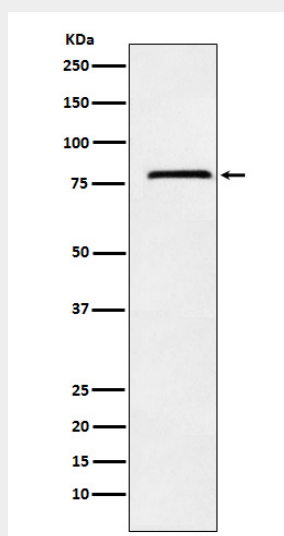
Mitochondrion inner membrane; Peripheral membrane protein {ECO:0000250|UniProtKB:P15690}; Matrix side {ECO:0000250|UniProtKB:P15690}

NDUFS1 Antibody - Protocols

Provided below are standard protocols that you may find useful for product applications.

- [Western Blot](#)
- [Blocking Peptides](#)
- [Dot Blot](#)
- [Immunohistochemistry](#)
- [Immunofluorescence](#)
- [Immunoprecipitation](#)
- [Flow Cytometry](#)
- [Cell Culture](#)

NDUFS1 Antibody - Images



Western blot analysis of NDUFS1 expression in Raji cell lysate.