

MDH1 Antibody
Rabbit mAb
Catalog # AP92328

Specification

MDH1 Antibody - Product Information

Application	WB, FC, ICC, IP
Primary Accession	P40925
Reactivity	Rat
Clonality	Monoclonal
Other Names	
MDH s; mdh1; MDHA; MDHs; MOR2;	
Isotype	Rabbit IgG
Host	Rabbit
Calculated MW	36426 Da

MDH1 Antibody - Additional Information

Purification	Affinity-chromatography
Immunogen	A synthesized peptide derived from human MDH1
Description	Belongs to the LDH/MDH superfamily. MDH type 2 family.
Storage Condition and Buffer	Rabbit IgG in phosphate buffered saline , pH 7.4, 150mM NaCl, 0.02% sodium azide and 50% glycerol. Store at +4°C short term. Store at -20°C long term. Avoid freeze / thaw cycle.

MDH1 Antibody - Protein Information

Name MDH1 {ECO:0000303|PubMed:34012073, ECO:0000312|HGNC:HGNC:6970}

Function

Catalyzes the reduction of aromatic alpha-keto acids in the presence of NADH (PubMed:2449162, PubMed:3052244). Plays essential roles in the malate-aspartate shuttle and the tricarboxylic acid cycle, important in mitochondrial NADH supply for oxidative phosphorylation (PubMed:31538237). Catalyzes the reduction of 2-oxoglutarate to 2- hydroxyglutarate, leading to elevated reactive oxygen species (ROS) (PubMed:34012073).

Cellular Location

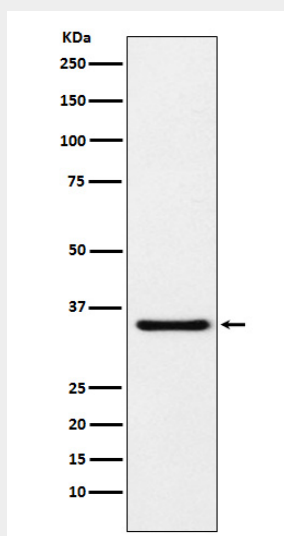
Cytoplasm, cytosol.

MDH1 Antibody - Protocols

Provided below are standard protocols that you may find useful for product applications.

- [Western Blot](#)
- [Blocking Peptides](#)
- [Dot Blot](#)
- [Immunohistochemistry](#)
- [Immunofluorescence](#)
- [Immunoprecipitation](#)
- [Flow Cytometry](#)
- [Cell Culture](#)

MDH1 Antibody - Images



Western blot analysis of MDH1 expression in HeLa cell lysate.