

**ATP1B1 Antibody**  
Rabbit mAb  
Catalog # AP92325

## Specification

---

### ATP1B1 Antibody - Product Information

Application	WB, IHC
Primary Accession	<a href="#">P05026</a>
Reactivity	Rat
Clonality	Monoclonal
<b>Other Names</b>	
Adenosinetriphosphatase; ATP1B; ATP1B1; Atpb 1; ATPBS;	
Isotype	Rabbit IgG
Host	Rabbit
Calculated MW	35061 Da

### ATP1B1 Antibody - Additional Information

Purification	Affinity-chromatography
Immunogen	A synthesized peptide derived from human ATP1B1
Description	This is the non-catalytic component of the active enzyme, which catalyzes the hydrolysis of ATP coupled with the exchange of Na(+) and K(+) ions across the plasma membrane. The beta subunit regulates, through assembly of alpha/beta heterodimers, the number of sodium pumps transported to the plasma membrane.
Storage Condition and Buffer	Rabbit IgG in phosphate buffered saline , pH 7.4, 150mM NaCl, 0.02% sodium azide and 50% glycerol. Store at +4°C short term. Store at -20°C long term. Avoid freeze / thaw cycle.

### ATP1B1 Antibody - Protein Information

**Name** ATP1B1

**Synonyms** ATP1B

#### Function

This is the non-catalytic component of the active enzyme, which catalyzes the hydrolysis of ATP coupled with the exchange of Na(+) and K(+) ions across the plasma membrane. The beta subunit regulates, through assembly of alpha/beta heterodimers, the number of sodium pumps transported to the plasma membrane (PubMed:<a href="http://www.uniprot.org/citations/19694409" target="\_blank">19694409</a>). Plays a role

in innate immunity by enhancing virus-triggered induction of interferons (IFNs) and interferon stimulated genes (ISGs). Mechanistically, enhances the ubiquitination of TRAF3 and TRAF6 as well as the phosphorylation of TAK1 and TBK1 (PubMed:<a href="http://www.uniprot.org/citations/34011520" target="\_blank">34011520</a>).

#### Cellular Location

Cell membrane; Single-pass type II membrane protein. Apical cell membrane {ECO:0000250|UniProtKB:P07340}; Single-pass type II membrane protein. Cell membrane, sarcolemma {ECO:0000250|UniProtKB:P14094}. Note=Colocalizes with OBSCN at the intercalated disk and sarcolemma in cardiomyocytes. Localizes in long striations at the level of Z and M lines {ECO:0000250|UniProtKB:P14094}

#### Tissue Location

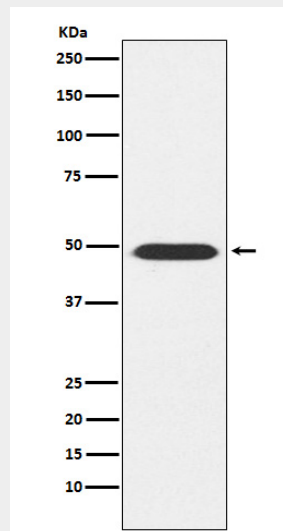
Found in most tissues.

### ATP1B1 Antibody - Protocols

Provided below are standard protocols that you may find useful for product applications.

- [Western Blot](#)
- [Blocking Peptides](#)
- [Dot Blot](#)
- [Immunohistochemistry](#)
- [Immunofluorescence](#)
- [Immunoprecipitation](#)
- [Flow Cytometry](#)
- [Cell Culture](#)

### ATP1B1 Antibody - Images



Western blot analysis of ATP1B1 expression in Mouse brain lysate.