

CRYAA Antibody
Rabbit mAb
Catalog # AP92323

Specification

CRYAA Antibody - Product Information

| | |
|------------------------------|------------------------|
| Application | WB, ICC |
| Primary Accession | P02489 |
| Reactivity | Rat |
| Clonality | Monoclonal |
| Other Names | |
| Acry 1; CRYA1; CRYAA; HspB4; | |
| Isotype | Rabbit IgG |
| Host | Rabbit |
| Calculated MW | 19909 Da |

CRYAA Antibody - Additional Information

| | |
|------------------------------|---|
| Purification | Affinity-chromatography |
| Immunogen | A synthesized peptide derived from human CRYAA |
| Description | May contribute to the transparency and refractive index of the lens. |
| Storage Condition and Buffer | Rabbit IgG in phosphate buffered saline , pH 7.4, 150mM NaCl, 0.02% sodium azide and 50% glycerol. Store at +4°C short term. Store at -20°C long term. Avoid freeze / thaw cycle. |

CRYAA Antibody - Protein Information

Name CRYAA

Synonyms CRYA1, HSPB4

Function

Contributes to the transparency and refractive index of the lens (PubMed: [18302245](http://www.uniprot.org/citations/18302245)). In its oxidized form (absence of intramolecular disulfide bond), acts as a chaperone, preventing aggregation of various proteins under a wide range of stress conditions (PubMed: [18199971](http://www.uniprot.org/citations/18199971), PubMed: [19595763](http://www.uniprot.org/citations/19595763), PubMed: [22120592](http://www.uniprot.org/citations/22120592), PubMed: [31792453](http://www.uniprot.org/citations/31792453)). Required for the correct formation of lens intermediate filaments as part of a complex composed of BFSP1, BFSP2 and CRYAA (PubMed: [28935373](http://www.uniprot.org/citations/28935373)).

Cellular Location

Cytoplasm. Nucleus. Note=Translocates to the nucleus during heat shock and resides in sub-nuclear structures known as SC35 speckles or nuclear splicing speckles

Tissue Location

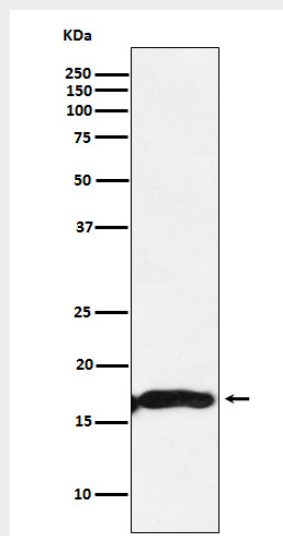
Expressed in the eye lens (at protein level).

CRYAA Antibody - Protocols

Provided below are standard protocols that you may find useful for product applications.

- [Western Blot](#)
- [Blocking Peptides](#)
- [Dot Blot](#)
- [Immunohistochemistry](#)
- [Immunofluorescence](#)
- [Immunoprecipitation](#)
- [Flow Cytometry](#)
- [Cell Culture](#)

CRYAA Antibody - Images



Western blot analysis of CRYAA expression in Mouse eyeball lysate.