

DLAT Antibody
Rabbit mAb
Catalog # AP92313

Specification

DLAT Antibody - Product Information

Application	WB, FC, ICC, IP
Primary Accession	P10515
Reactivity	Rat
Clonality	Monoclonal
Other Names	
DLAT; DLTA; E2; PBC; PDCE2;	
Isotype	Rabbit IgG
Host	Rabbit
Calculated MW	68997 Da

DLAT Antibody - Additional Information

Purification	Affinity-chromatography
Immunogen	A synthesized peptide derived from human DLAT
Description	The pyruvate dehydrogenase complex catalyzes the overall conversion of pyruvate to acetyl-CoA and CO ₂ . It contains multiple copies of three enzymatic components: pyruvate dehydrogenase (E1), dihydrolipoamide acetyltransferase (E2) and lipoamide dehydrogenase (E3).
Storage Condition and Buffer	Rabbit IgG in phosphate buffered saline , pH 7.4, 150mM NaCl, 0.02% sodium azide and 50% glycerol. Store at +4°C short term. Store at -20°C long term. Avoid freeze / thaw cycle.

DLAT Antibody - Protein Information

Name DLAT ([HGNC:2896](#))

Synonyms DLTA

Function

As part of the pyruvate dehydrogenase complex, catalyzes the transfers of an acetyl group to a lipoic acid moiety (Probable). The pyruvate dehydrogenase complex, catalyzes the overall conversion of pyruvate to acetyl-CoA and CO₂, and thereby links cytoplasmic glycolysis and the mitochondrial tricarboxylic acid (TCA) cycle (Probable).

Cellular Location

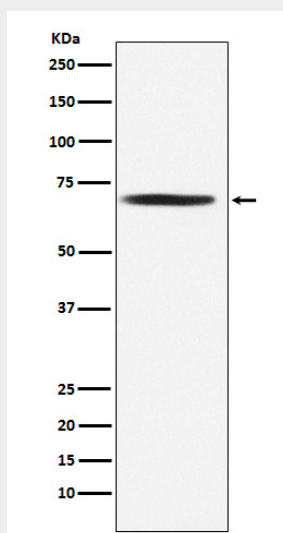
Mitochondrion matrix {ECO:0000250|UniProtKB:P08461}

DLAT Antibody - Protocols

Provided below are standard protocols that you may find useful for product applications.

- [Western Blot](#)
- [Blocking Peptides](#)
- [Dot Blot](#)
- [Immunohistochemistry](#)
- [Immunofluorescence](#)
- [Immunoprecipitation](#)
- [Flow Cytometry](#)
- [Cell Culture](#)

DLAT Antibody - Images



Western blot analysis of DLAT expression in Jurkat cell lysate.